

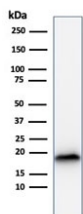
Recombinant Melan-A Antibody [clone rMLANA/788] (V3717)

Catalog No.	Formulation	Size
V3717-100UG	0.2 mg/ml in 1X PBS with 0.1 mg/ml BSA (US sourced) and 0.05% sodium azide	100 ug
V3717-20UG	0.2 mg/ml in 1X PBS with 0.1 mg/ml BSA (US sourced) and 0.05% sodium azide	20 ug
V3717SAF-100UG	1 mg/ml in 1X PBS; BSA free, sodium azide free	100 ug
V3717IHC-7ML	Prediluted in 1X PBS with 0.1 mg/ml BSA (US sourced) and 0.05% sodium azide; *For IHC use only*	7 ml

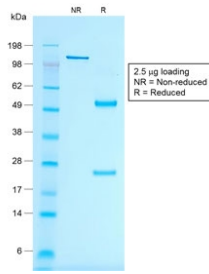
Recombinant **MOUSE MONOCLONAL**

[Bulk quote request](#)

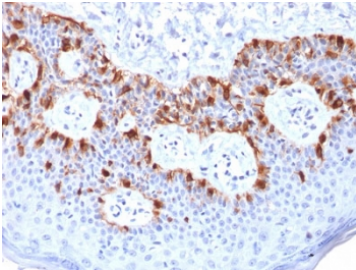
Availability	1-3 business days
Species Reactivity	Human
Format	Purified
Host	Mouse
Clonality	Recombinant Mouse Monoclonal
Isotype	Mouse IgG1, kappa
Clone Name	rMLANA/788
Purity	Protein G affinity chromatography
UniProt	Q16655
Localization	Cytoplasmic
Applications	Immunohistochemistry (FFPE) : 1-2ug/ml for 30 min at RT Western Blot : 1-2ug/ml
Limitations	This recombinant Melan-A antibody is available for research use only.



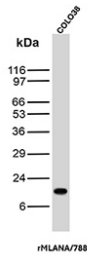
Melan-A Antibody WB. Western blot testing of human COLO-38 cell lysate with recombinant Melan-A antibody (clone rMLANA/788). Expected molecular weight ~20 kDa with possible doublet.



SDS-PAGE analysis of purified, BSA-free recombinant Melan-A antibody (clone rMLANA/788) as confirmation of integrity and purity.



Melan-A Antibody Melanoma IHC. Immunohistochemistry testing of FFPE human melanoma with recombinant Melan-A antibody (clone rMLANA/788). HIER: boil tissue sections in pH 9 10mM Tris with 1mM EDTA for 10-20 min followed by cooling at RT for 20 min.



Western blot testing of human COLO-38 cell lysate with recombinant Melan-A antibody (clone rMLANA/788). Expected molecular weight ~20 kDa with possible doublet.

Description

This antibody recognizes a protein doublet of 20-22kDa, identified as MART-1 (Melanoma Antigen Recognized by T cells 1) or Melan-A. MART-1 is a newly identified melanocyte differentiation antigen recognized by autologous cytotoxic T lymphocytes. Seven other melanoma associated antigens recognized by autologous cytotoxic T cells include MAGE-1, MAGE-3, tyrosinase, gp100, gp75, BAGE-1, and GAGE-1. Subcellular fractionation shows that MART-1 is present in melanosomes and endoplasmic reticulum. This mAb labels melanomas and other tumors showing melanocytic differentiation. It is also a useful positive-marker for angiomyolipomas. It does not stain tumor cells of epithelial, lymphoid, glial, or mesenchymal origin.

This antibody is part of the [Melan-A antibody collection](#), where additional MLANA/MART-1 antibodies for various applications can be explored.

Application Notes

Optimal dilution of the recombinant Melan-A antibody should be determined by the researcher.

1. The prediluted format is supplied in a dropper bottle and is optimized for use in IHC. After epitope retrieval step (if required), drip mAb solution onto the tissue section and incubate at RT for 30 min.

Immunogen

Recombinant human MLANA protein was used as the immunogen for the recombinant Melan-A antibody.

Storage

Store the recombinant Melan-A antibody at 2-8°C (with azide) or aliquot and store at -20°C or colder (without azide).

