

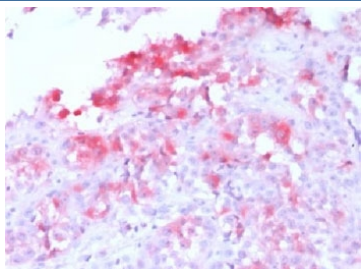
Recombinant Melan-A Antibody / Rabbit Monoclonal [clone MLANA/1761R] (V7268)

Catalog No.	Formulation	Size
V7268-100UG	0.2 mg/ml in 1X PBS with 0.1 mg/ml BSA (US sourced) and 0.05% sodium azide	100 ug
V7268-20UG	0.2 mg/ml in 1X PBS with 0.1 mg/ml BSA (US sourced) and 0.05% sodium azide	20 ug
V7268SAF-100UG	1 mg/ml in 1X PBS; BSA free, sodium azide free	100 ug
V7268IHC-7ML	Prediluted in 1X PBS with 0.1 mg/ml BSA (US sourced) and 0.05% sodium azide; *For IHC use only*	7 ml

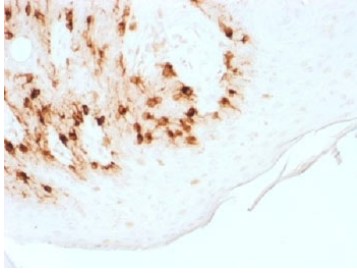
Recombinant **RABBIT MONOCLONAL**

[Bulk quote request](#)

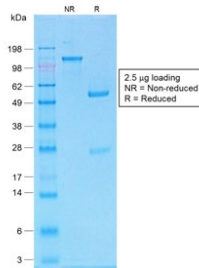
Availability	1-3 business days
Species Reactivity	Human
Format	Purified
Host	Rabbit
Clonality	Recombinant Rabbit Monoclonal
Isotype	Rabbit IgG, kappa
Clone Name	MLANA/1761R
Purity	Protein A affinity chromatography
UniProt	Q16655
Localization	Cytoplasmic
Applications	Immunohistochemistry (FFPE) : 1-2ug/ml for 30 min at RT Western Blot : 1-2ug/ml
Limitations	This recombinant Melan-A antibody is available for research use only.



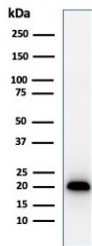
IHC testing FFPE human melanoma with recombinant Melan-A antibody (clone MLANA/1761R). HIER: steam sections in pH 9 10mM Tris with 1mM EDTA for 10-20 min.



IHC testing of FFPE human skin with recombinant Melan-A antibody (clone MLANA/1761R). HIER: steam sections in pH 9 10mM Tris with 1mM EDTA for 10-20 min.



SDS-PAGE analysis of purified, BSA-free recombinant Melan-A antibody (clone MLANA/1761R) as confirmation of integrity and purity.



Western blot testing of human COLO-38 cell lysate with recombinant Melan-A antibody (clone MLANA/1761R). Expected molecular weight ~20 kDa with possible doublet.

Description

MART-1/Melan-A is a protein antigen that is found on the surface of melanocytes. Antibodies against the antigen are used in the medical specialty of anatomic pathology in order to recognize cells of melanocytic differentiation, useful for the diagnosis of a melanoma. The MART-1/Melan-A antigen is specific for the melanocyte lineage, found in normal skin, the retina, and melanocytes, but not in other normal tissues. It is thus useful as a marker for melanocytic tumors (melanomas) with the caveat that it is normally found in benign nevi as well. [Wiki]

Application Notes

The optimal dilution of the recombinant Melan-A antibody for each application should be determined by the researcher.

1. The prediluted format is supplied in a dropper bottle and is optimized for use in IHC. After epitope retrieval step (if required), drip mAb solution onto the tissue section and incubate at RT for 30 min.

Immunogen

Human protein was used as the immunogen for this recombinant Melan-A antibody.

Storage

Store the recombinant Melan-A antibody at 2-8°C (with azide) or aliquot and store at -20°C or colder (without azide).

