

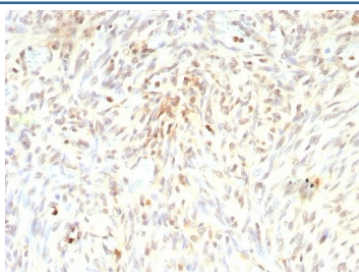
Recombinant MDM2 Antibody [clone rMDM2/9214] (V5575)

Catalog No.	Formulation	Size
V5575-100UG	0.2 mg/ml in 1X PBS with 0.1 mg/ml BSA (US sourced), 0.05% sodium azide	100 ug
V5575-20UG	0.2 mg/ml in 1X PBS with 0.1 mg/ml BSA (US sourced), 0.05% sodium azide	20 ug
V5575SAF-100UG	1 mg/ml in 1X PBS; BSA free, sodium azide free	100 ug

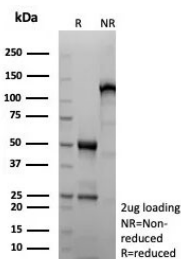
Recombinant **MOUSE MONOCLONAL**

[Bulk quote request](#)

Availability	1-3 business days
Species Reactivity	Human
Format	Purified
Clonality	Recombinant Mouse Monoclonal
Isotype	Mouse IgG2b, kappa
Clone Name	rMDM2/9214
Purity	Protein A/G affinity
UniProt	Q00987
Localization	Nucleus
Applications	Immunohistochemistry (FFPE) : 1-2ug/ml
Limitations	This recombinant MDM2 antibody is available for research use only.



IHC staining of FFPE human liposarcoma tissue with recombinant MDM2 antibody (clone rMDM2/9214). HIER: boil tissue sections in pH 9 10mM Tris with 1mM EDTA for 20 min and allow to cool before testing.



SDS-PAGE analysis of purified, BSA-free recombinant MDM2 antibody (clone rMDM2/9214) as confirmation of integrity and purity.

Description

MDM2 is a nuclear phosphoprotein that binds and inhibits transactivation by tumor protein p53. It can promote tumor formation by targeting tumor suppressor proteins, such as p53, for proteasomal degradation. Overexpression of MDM2 can result in excessive inactivation of tumor protein p53, diminishing its tumor suppressor function. This protein also affects the cell cycle, apoptosis, and tumorigenesis through interactions with other proteins, including retinoblastoma 1 and ribosomal protein L5. Overexpression of MDM2 protein is detected in a variety of cancers.

Application Notes

Optimal dilution of the recombinant MDM2 antibody should be determined by the researcher.

Immunogen

A recombinant human MDM2 protein fragment was used as the immunogen for the recombinant MDM2 antibody.

Storage

Aliquot the recombinant MDM2 antibody and store frozen at -20°C or colder. Avoid repeated freeze-thaw cycles.