

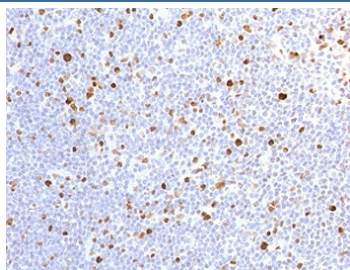
## Recombinant MCM7 Antibody [clone MMCC7-1R] (V7360)

Catalog No.	Formulation	Size
V7360-100UG	0.2 mg/ml in 1X PBS with 0.1 mg/ml BSA (US sourced) and 0.05% sodium azide	100 ug
V7360-20UG	0.2 mg/ml in 1X PBS with 0.1 mg/ml BSA (US sourced) and 0.05% sodium azide	20 ug
V7360SAF-100UG	1 mg/ml in 1X PBS; BSA free, sodium azide free	100 ug
V7360IHC-7ML	Prediluted in 1X PBS with 0.1 mg/ml BSA (US sourced) and 0.05% sodium azide; *For IHC use only*	7 ml

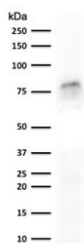
Recombinant **RABBIT MONOCLONAL**

[Bulk quote request](#)

<b>Availability</b>	1-3 business days
<b>Species Reactivity</b>	Human
<b>Format</b>	Purified
<b>Host</b>	Rabbit
<b>Clonality</b>	Recombinant Rabbit Monoclonal
<b>Isotype</b>	Rabbit IgG, kappa
<b>Clone Name</b>	MMCC7-1R
<b>Purity</b>	Protein A affinity chromatography
<b>UniProt</b>	P33993
<b>Localization</b>	Nuclear
<b>Applications</b>	Western Blot : 1-2ug/ml Immunohistochemistry (FFPE) : 1-2ug/ml for 30 min at RT Prediluted IHC Only Format : incubate for 30 min at RT (1)
<b>Limitations</b>	This recombinant MCM7 antibody is available for research use only.



IHC testing of FFPE human lymph node with recombinant MCM7 antibody (clone MMCC7-1R). Required HIER: boil tissue sections in pH 9 10mM Tris with 1mM EDTA for 10-20 min.



Western blot testing of human MCF7 cell lysate with recombinant MCM7 antibody (clone MMCC7-1R). Expected molecular weight: 80~90 kDa.

## Description

Acts as component of the MCM2-7 complex (MCM complex) which is the putative replicative helicase essential for 'once per cell cycle' DNA replication initiation and elongation in eukaryotic cells. The active ATPase sites in the MCM2-7 ring are formed through the interaction surfaces of two neighboring subunits such that a critical structure of a conserved arginine finger motif is provided in trans relative to the ATP-binding site of the Walker A box of the adjacent subunit. The six ATPase active sites, however, are likely to contribute differentially to the complex helicase activity. Required for S-phase checkpoint activation upon UV-induced damage. [UniProt]

## Application Notes

The stated application concentrations are suggested starting points. Titration of the recombinant MCM7 antibody may be required due to differences in protocols and secondary/substrate sensitivity.

1. The prediluted format is supplied in a dropper bottle and is optimized for use in IHC. After epitope retrieval step (if required), drip mAb solution onto the tissue section and incubate at RT for 30 min.

## Immunogen

Amino acids 195-319 from the human protein were used as the immunogen for the recombinant MCM7 antibody.

## Storage

Store the recombinant MCM7 antibody at 2-8°C (with azide) or aliquot and store at -20°C or colder (without azide).