

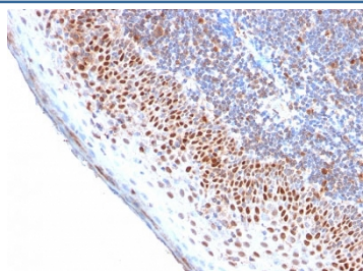
## Recombinant MCM7 Antibody [clone MCM7/2756R] (V7298)

Catalog No.	Formulation	Size
V7298-100UG	0.2 mg/ml in 1X PBS with 0.1 mg/ml BSA (US sourced) and 0.05% sodium azide	100 ug
V7298-20UG	0.2 mg/ml in 1X PBS with 0.1 mg/ml BSA (US sourced) and 0.05% sodium azide	20 ug
V7298SAF-100UG	1 mg/ml in 1X PBS; BSA free, sodium azide free	100 ug
V7298IHC-7ML	Prediluted in 1X PBS with 0.1 mg/ml BSA (US sourced) and 0.05% sodium azide; *For IHC use only*	7 ml

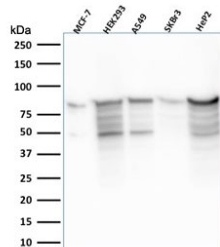
Recombinant **RABBIT MONOCLONAL**

[Bulk quote request](#)

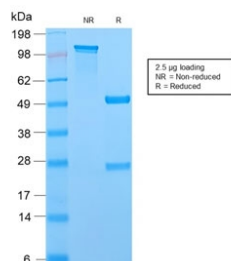
<b>Availability</b>	1-3 business days
<b>Species Reactivity</b>	Human
<b>Format</b>	Purified
<b>Clonality</b>	Recombinant Rabbit Monoclonal
<b>Isotype</b>	Rabbit IgG, kappa
<b>Clone Name</b>	MCM7/2756R
<b>Purity</b>	Protein A affinity chromatography
<b>UniProt</b>	P33993
<b>Localization</b>	Nuclear
<b>Applications</b>	Western Blot : 1-2ug/ml Immunohistochemistry (FFPE) : 1-2ug/ml for 30 min at RT
<b>Limitations</b>	This recombinant MCM7 antibody is available for research use only.



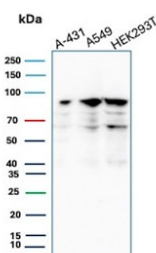
IHC testing of FFPE human tonsil with recombinant MCM7 antibody. Required HIER: boil tissue sections in pH 9 10mM Tris with 1mM EDTA for 10-20 min.



Western blot testing of human samples with MCM7 antibody (clone MCM7/2756R).  
Expected molecular weight: 80-90 kDa.



SDS-PAGE analysis of purified, BSA-free recombinant MCM7 antibody (clone MCM7/2756R) as confirmation of integrity and purity.



Western blot testing of human samples with MCM7 antibody (clone MCM7/2756R).  
Expected molecular weight: 80-90 kDa.

## Description

MCM7 is one of the highly conserved mini-chromosome maintenance proteins (MCM) that is essential for the initiation of eukaryotic genome replication. The hexameric protein complex formed by the MCM proteins is a key component of the pre-replication complex and may be involved in the formation of replication forks and in the recruitment of other DNA replication related proteins. The MCM complex consisting of this protein and MCM2, 4 and 6 proteins possesses DNA helicase activity, and may act as a DNA unwinding enzyme. Cyclin D1-dependent kinase, CDK4, is found to associate with this protein, and may regulate the binding of this protein with the tumor suppressor protein RB1/RB.

## Application Notes

Titration of the recombinant MCM7 antibody may be required for optimal performance.

1. The prediluted format is supplied in a dropper bottle and is optimized for use in IHC. After epitope retrieval step (if required), drip mAb solution onto the tissue section and incubate at RT for 30 min.

## Immunogen

A human recombinant partial protein corresponding to amino acids 195-319 was used as the immunogen for the recombinant MCM7 antibody.

## Storage

Store the recombinant MCM7 antibody at 2-8°C (with azide) or aliquot and store at -20°C or colder (without azide).

