

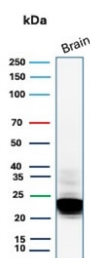
## Recombinant MBP Antibody / Myelin Basic Protein [clone rMBP/9301] (V5403)

Catalog No.	Formulation	Size
V5403-100UG	0.2 mg/ml in 1X PBS with 0.1 mg/ml BSA (US sourced), 0.05% sodium azide	100 ug
V5403-20UG	0.2 mg/ml in 1X PBS with 0.1 mg/ml BSA (US sourced), 0.05% sodium azide	20 ug
V5403SAF-100UG	1 mg/ml in 1X PBS; BSA free, sodium azide free	100 ug

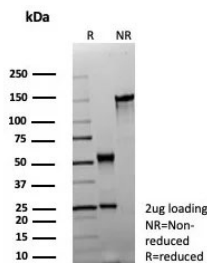
### Recombinant MOUSE MONOCLONAL

[Bulk quote request](#)

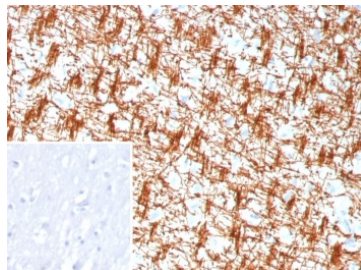
Availability	1-3 business days
Species Reactivity	Human
Format	Purified
Host	Mouse
Clonality	Recombinant Mouse Monoclonal
Isotype	Mouse IgG2b, kappa
Clone Name	rMBP/9301
Purity	Protein A/G affinity
UniProt	P02686
Applications	Immunohistochemistry (FFPE) : 1-2ug/ml Western Blot : 2-4ug/ml
Limitations	This recombinant MBP antibody is available for research use only.



Western blot testing of human brain tissue with recombinant MBP antibody. Expected molecular weight: 22-37 kDa.



SDS-PAGE analysis of purified recombinant MBP antibody (clone rMBP/9301) as confirmation of integrity and purity.



IHC staining of FFPE human brain tissue with recombinant MBP antibody (clone rMBP/9301). Inset: PBS used in place of primary Ab (secondary Ab negative control).  
HIER: boil tissue sections in pH 9 10mM Tris with 1mM EDTA for 20 min and allow to cool before testing.

## Description

Myelin basic protein (MBP) is the second most abundant protein in central nervous system (CNS) myelin: it comprises 30% of the total protein and about 10% of the dry weight of myelin. It is the only structural protein found so far to be essential for formation of CNS myelin, and has been called the executive molecule of myelin. MBP can interact with a number of polyanionic proteins including actin, tubulin, calmodulin, and clathrin, and negatively charged lipids, and acquires structure on binding to them. It may act as a membrane actin-binding protein, which might allow it to participate in transmission of extracellular signals to the cytoskeleton in oligodendrocytes and tight junctions in myelin. MBP may be applicable as a marker for oligodendrogliomas. Clone rMBP/9301 is used in a two-site ELISA with clone MBP/4273 (cat # V8677). Both are used interchangeably as capture and detection antibody.

## Application Notes

Optimal dilution of the recombinant MBP antibody should be determined by the researcher.

## Immunogen

A recombinant fragment (within amino acids 1-157) of human Myelin Basic Protein was used as the immunogen for the recombinant MBP antibody.

## Storage

Aliquot the recombinant MBP antibody and store frozen at -20oC or colder. Avoid repeated freeze-thaw cycles.