

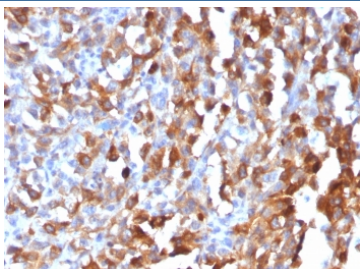
Recombinant MART-1 Antibody / Rabbit Monoclonal [clone MLANA/1409R] (V7267)

Catalog No.	Formulation	Size
V7267-100UG	0.2 mg/ml in 1X PBS with 0.1 mg/ml BSA (US sourced) and 0.05% sodium azide	100 ug
V7267-20UG	0.2 mg/ml in 1X PBS with 0.1 mg/ml BSA (US sourced) and 0.05% sodium azide	20 ug
V7267SAF-100UG	1 mg/ml in 1X PBS; BSA free, sodium azide free	100 ug
V7267IHC-7ML	Prediluted in 1X PBS with 0.1 mg/ml BSA (US sourced) and 0.05% sodium azide; *For IHC use only*	7 ml

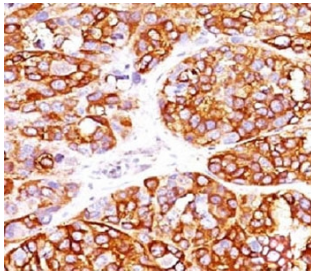
Recombinant **RABBIT MONOCLONAL**

[Bulk quote request](#)

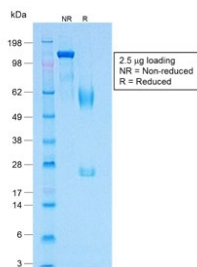
Availability	1-3 business days
Species Reactivity	Human
Format	Purified
Host	Rabbit
Clonality	Recombinant Rabbit Monoclonal
Isotype	Rabbit IgG, kappa
Clone Name	MLANA/1409R
Purity	Protein A affinity chromatography
UniProt	Q16655
Localization	Cytoplasmic
Applications	Immunohistochemistry (FFPE) : 1-2ug/ml for 30 min at RT Western Blot : 1-2ug/ml
Limitations	This recombinant MART-1 antibody is available for research use only.



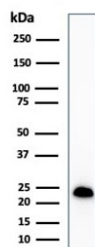
MART-1 Antibody Melanoma IHC. Immunohistochemistry testing of formalin-fixed, paraffin-embedded human melanoma stained with recombinant MART-1 antibody (clone MLANA/1409R). HIER: steam sections in pH 9 10mM Tris with 1mM EDTA for 10-20 min followed by cooling at RT for 20 min.



IHC testing of formalin-fixed, paraffin-embedded human melanoma stained with recombinant MART-1 antibody (clone MLANA/1409R). HIER: steam sections in pH 9 10mM Tris with 1mM EDTA for 10-20 min followed by cooling at RT for 20 min.



SDS-PAGE analysis of purified, BSA-free recombinant MART-1 antibody (clone MLANA/1409R) as confirmation of integrity and purity.



Western blot testing of human COLO-38 cell lysate with recombinant Melan-A antibody (clone MLANA/1761R). Expected molecular weight ~20 kDa with possible doublet.

Description

MART-1/Melan-A is a protein antigen that is found on the surface of melanocytes. Antibodies against the antigen are used in the medical specialty of anatomic pathology in order to recognize cells of melanocytic differentiation, useful for the diagnosis of a melanoma. The MART-1/Melan-A antigen is specific for the melanocyte lineage, found in normal skin, the retina, and melanocytes, but not in other normal tissues. It is thus useful as a marker for melanocytic tumors (melanomas) with the caveat that it is normally found in benign nevi as well. [Wiki]

This antibody is part of the [Melan-A antibody collection](#), where additional MLANA/MART-1 antibodies for various applications can be explored.

Application Notes

The optimal dilution of the recombinant MART-1 antibody for each application should be determined by the researcher.

1. The prediluted format is supplied in a dropper bottle and is optimized for use in IHC. After epitope retrieval step (if required), drip mAb solution onto the tissue section and incubate at RT for 30 min.

Immunogen

Human protein was used as the immunogen for this recombinant MART-1 antibody.

Storage

Store the recombinant MART-1 antibody at 2-8°C (with azide) or aliquot and store at -20°C or colder (without azide).

