

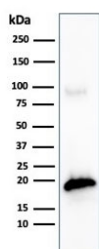
## Recombinant MART-1 Antibody / Melan-A [clone MLANA/4475R] (V8661)

Catalog No.	Formulation	Size
V8661-100UG	0.2 mg/ml in 1X PBS with 0.1 mg/ml BSA (US sourced) and 0.05% sodium azide	100 ug
V8661-20UG	0.2 mg/ml in 1X PBS with 0.1 mg/ml BSA (US sourced) and 0.05% sodium azide	20 ug
V8661SAF-100UG	1 mg/ml in 1X PBS; BSA free, sodium azide free	100 ug

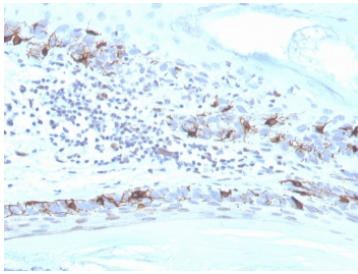
Recombinant **RABBIT MONOCLONAL**

[Bulk quote request](#)

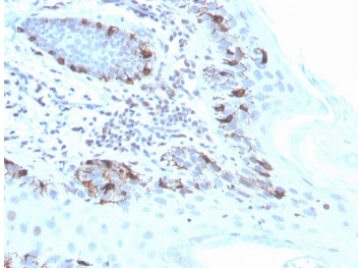
Availability	1-3 business days
Species Reactivity	Human
Format	Purified
Clonality	Recombinant Rabbit Monoclonal
Isotype	Rabbit IgG
Clone Name	MLANA/4475R
Purity	Protein A affinity chromatography
UniProt	Q16655
Localization	Cytoplasmic
Applications	Western Blot : 2-4ug/ml Immunohistochemistry (FFPE) : 1-2ug/ml for 30 minutes at RT
Limitations	This recombinant MART-1 antibody is available for research use only.



Western blot testing of human COLO-38 cell lysate with recombinant MART-1 antibody (clone MLANA/4475R). Expected molecular weight ~20 kDa with possible doublet.



IHC staining of FFPE human skin with recombinant MART-1 antibody (clone MLANA/4475R). HIER: boil tissue sections in pH 9 10mM Tris with 1mM EDTA for 20 min and allow to cool before testing.



IHC staining of FFPE human skin with recombinant MART-1 antibody (clone MLANA/4475R). HIER: boil tissue sections in pH 9 10mM Tris with 1mM EDTA for 20 min and allow to cool before testing.

## Description

This antibody recognizes a protein doublet of 20-22kDa, identified as MART-1 (Melanoma Antigen Recognized by T cells 1) or Melan-A. MART-1 is a melanocyte differentiation antigen recognized by autologous cytotoxic T lymphocytes. Seven other melanoma associated antigens recognized by autologous cytotoxic T cells include MAGE-1, MAGE-3, tyrosinase, gp100, gp75, BAGE-1, and GAGE-1. Subcellular fractionation shows that MART-1 is present in melanosomes and endoplasmic reticulum. This MAb labels melanomas and other tumors showing melanocytic differentiation. It is also a useful positive-marker for angiomyolipomas. It does not stain tumor cells of epithelial, lymphoid, glial, or mesenchymal origin.

## Application Notes

Optimal dilution of the recombinant MART-1 antibody should be determined by the researcher.

## Immunogen

Recombinant full-length human MART-1 protein was used as the immunogen for the recombinant MART-1 antibody.

## Storage

Store the recombinant MART-1 antibody at 2-8°C (with azide) or aliquot and store at -20°C or colder (without azide).