

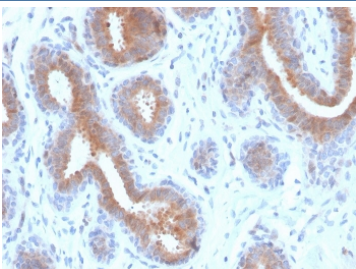
Recombinant Mammaglobin Antibody / SCGB2A2 [clone rMGB/4299] (V8618)

Catalog No.	Formulation	Size
V8618-100UG	0.2 mg/ml in 1X PBS with 0.1 mg/ml BSA (US sourced) and 0.05% sodium azide	100 ug
V8618-20UG	0.2 mg/ml in 1X PBS with 0.1 mg/ml BSA (US sourced) and 0.05% sodium azide	20 ug
V8618SAF-100UG	1 mg/ml in 1X PBS; BSA free, sodium azide free	100 ug

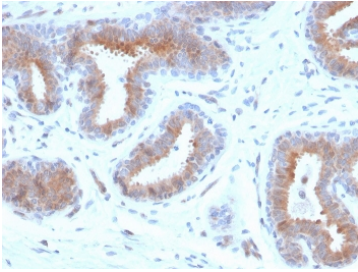
Recombinant **MOUSE MONOCLONAL**

[Bulk quote request](#)

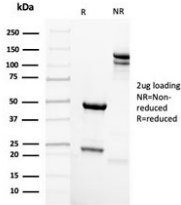
Availability	1-3 business days
Species Reactivity	Human
Format	Purified
Host	Mouse
Clonality	Recombinant Mouse Monoclonal
Isotype	Mouse IgG2a, kappa
Clone Name	rMGB/4299
Purity	Protein G affinity chromatography
UniProt	Q13296
Localization	Cytoplasm
Applications	Immunohistochemistry (FFPE) : 1-2ug/ml for 30 minutes at RT
Limitations	This recombinant Mammaglobin antibody is available for research use only.



IHC staining of FFPE human breast carcinoma with recombinant Mammaglobin antibody (clone rMGB/4299). HIER: boil tissue sections in pH 9 10mM Tris with 1mM EDTA for 20 min and allow to cool before testing.



IHC staining of FFPE human breast carcinoma with recombinant Mammaglobin antibody (clone rMGB/4299). HIER: boil tissue sections in pH 9 10mM Tris with 1mM EDTA for 20 min and allow to cool before testing.



SDS-PAGE analysis of purified, BSA-free recombinant Mammaglobin antibody (clone rMGB/4299) as confirmation of integrity and purity.

Description

Mammaglobin is a 93 amino acid glycoprotein with homology to other secretoglobin-uteroglobin family members. It was originally identified as a breast cancer restricted biomarker by differential screening. Mammaglobin related to secretoglobin family that includes human uteroglobin and lipophilin. Mammaglobin antibody stains cytoplasm of normal breast epithelial cells as well as primary and metastatic breast carcinomas. Mammaglobin expression is absent in prostate, kidney, colon, rectum, small intestine, stomach, pancreas, lung, and thyroid tissues. Mammaglobin may be used as part of an immunohistochemical panel for determination of metastatic breast carcinoma and tumor of unknown primary origin.

Application Notes

Optimal dilution of the recombinant Mammaglobin antibody should be determined by the researcher.

Storage

Store the recombinant Mammaglobin antibody at 2-8oC (with azide) or aliquot and store at -20oC or colder (without azide).