

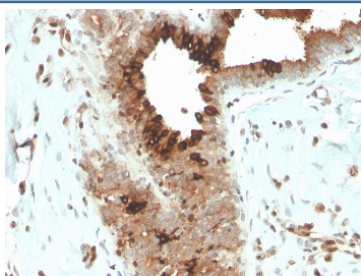
## Recombinant Mammaglobin Antibody / SCGB2A2 [clone MGB/4057R] (V8617)

Catalog No.	Formulation	Size
V8617-100UG	0.2 mg/ml in 1X PBS with 0.1 mg/ml BSA (US sourced) and 0.05% sodium azide	100 ug
V8617-20UG	0.2 mg/ml in 1X PBS with 0.1 mg/ml BSA (US sourced) and 0.05% sodium azide	20 ug
V8617SAF-100UG	1 mg/ml in 1X PBS; BSA free, sodium azide free	100 ug

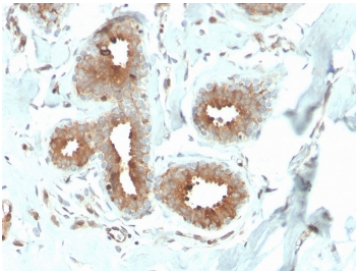
Recombinant **RABBIT MONOCLONAL**

[Bulk quote request](#)

Availability	1-3 business days
Species Reactivity	Human
Format	Purified
Clonality	Recombinant Rabbit Monoclonal
Isotype	Rabbit IgG, kappa
Clone Name	MGB/4057R
Purity	Protein A affinity chromatography
UniProt	Q13296
Localization	Cytoplasm
Applications	Immunohistochemistry (FFPE) : 1-2ug/ml for 30 minutes at RT
Limitations	This recombinant Mammaglobin antibody is available for research use only.

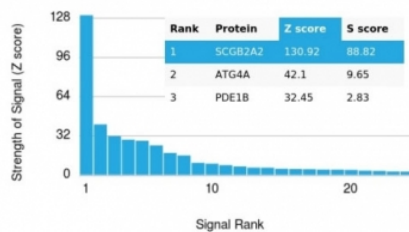


IHC staining of FFPE human breast carcinoma with recombinant Mammaglobin antibody (clone MGB/4057R). HIER: boil tissue sections in pH 9 10mM Tris with 1mM EDTA for 20 min and allow to cool before testing.



IHC staining of FFPE human breast carcinoma with recombinant Mammaglobin antibody (clone MGB/4057R). HIER: boil tissue sections in pH 9 10mM Tris with 1mM EDTA for 20 min and allow to cool before testing.

Human Protein Microarray Specificity Validation



Analysis of HuProt(TM) microarray containing more than 19,000 full-length human proteins using recombinant Mammaglobin antibody (clone MGB/4057R). These results demonstrate the foremost specificity of the MGB/4057R mAb. Z- and S- score: The Z-score represents the strength of a signal that an antibody (in combination with a fluorescently-tagged anti-IgG secondary Ab) produces when binding to a particular protein on the HuProt(TM) array. Z-scores are described in units of standard deviations (SD's) above the mean value of all signals generated on that array. If the targets on the HuProt(TM) are arranged in descending order of the Z-score, the S-score is the difference (also in units of SD's) between the Z-scores. The S-score therefore represents the relative target specificity of an Ab to its intended target.

## Description

Recombinant Mammaglobin antibody detects mammaglobin, a secreted glycoprotein encoded by the SCGB2A2 gene. Mammaglobin is expressed almost exclusively in breast epithelial tissue, where it plays roles in secretion and epithelial differentiation. Because of its restricted expression and frequent upregulation in breast cancer, Recombinant Mammaglobin antibody is a valuable marker in oncology, pathology, and breast cancer diagnostics.

Mammaglobin belongs to the secretoglobulin family of small secretory proteins. Although its precise physiological function remains incompletely understood, it is believed to contribute to secretory processes in mammary epithelium. In cancer, mammaglobin expression is upregulated in a significant proportion of breast tumors, making it an important biomarker for identifying breast tissue origin in both primary and metastatic settings.

The Recombinant Mammaglobin antibody clone MGB/4057R provides consistent and reliable recognition of this marker. Recombinant technology ensures uniformity across production lots, reducing variability in immunohistochemistry and other assays. Clone MGB/4057R has been referenced in peer-reviewed studies exploring breast tumor classification, metastatic disease, and biomarker validation. Its specificity and reproducibility make it a dependable antibody for clinical and research applications.

Research using clone MGB/4057R has highlighted its diagnostic utility in distinguishing breast carcinoma from other adenocarcinomas, particularly in metastatic lesions where the tissue of origin is unclear. This antibody has also been applied in studies investigating mammaglobin's potential role in tumor biology and patient prognosis. Its restricted expression pattern enhances its value as a breast-specific marker for research and diagnostics.

NSJ Bioreagents supplies this Recombinant Mammaglobin antibody to support oncology, breast cancer research, and diagnostic pathology. Alternate designations include SCGB2A2 antibody, secretoglobulin family 2A member 2 antibody, breast-specific secretory protein antibody, mammary carcinoma marker antibody, and breast epithelium biomarker antibody.

## Application Notes

Optimal dilution of the recombinant Mammaglobin antibody should be determined by the researcher.

## Immunogen

Recombinant full-length human Mammaglobin-1 protein was used as the immunogen for the recombinant Mammaglobin antibody.

## Storage

Store the recombinant Mammaglobin antibody at 2-8oC (with azide) or aliquot and store at -20oC or colder (without azide).