

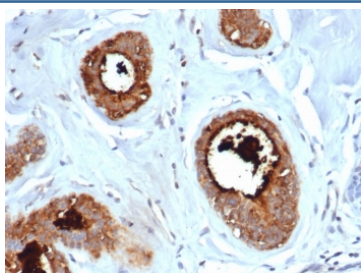
Mammaglobin A Antibody Recombinant Mouse MAb / SCGB2A2 Antibody [clone rMGB/6619] (V9143)

Catalog No.	Formulation	Size
V9143-100UG	0.2 mg/ml in 1X PBS with 0.1 mg/ml BSA (US sourced), 0.05% sodium azide	100 ug
V9143-20UG	0.2 mg/ml in 1X PBS with 0.1 mg/ml BSA (US sourced), 0.05% sodium azide	20 ug
V9143SAF-100UG	1 mg/ml in 1X PBS; BSA free, sodium azide free	100 ug

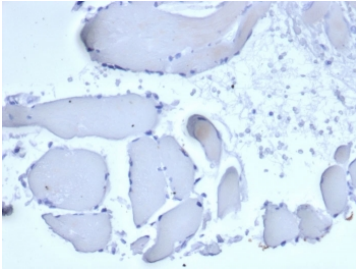
Recombinant **MOUSE MONOCLONAL**

[Bulk quote request](#)

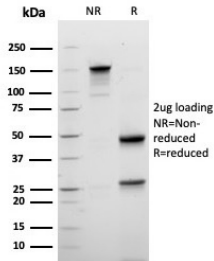
Availability	1-3 business days
Species Reactivity	Human
Format	Purified
Host	Mouse
Clonality	Recombinant Mouse Monoclonal
Isotype	Mouse IgG1, kappa
Clone Name	rMGB/6619
Purity	Protein A/G affinity
UniProt	Q13296
Localization	Cytoplasm
Applications	Immunohistochemistry (FFPE) : 1-2ug/ml
Limitations	This Mammaglobin A antibody is available for research use only.



Mammaglobin A Antibody Recombinant Mouse MAb (clone rMGB/6619) immunohistochemistry of human lactating breast tissue. FFPE human lactating breast tissue was stained with Mammaglobin A Antibody Recombinant Mouse MAb (clone rMGB/6619). HRP-DAB brown chromogenic signal highlights strong cytoplasmic staining in secretory epithelial cells lining mammary glandular structures and luminal secretions, consistent with elevated expression of Mammaglobin A / SCGB2A2 in lactating breast epithelium, while surrounding stromal cells show minimal staining. Heat-induced epitope retrieval was performed by boiling tissue sections in pH 9 10mM Tris with 1mM EDTA for 20 minutes followed by cooling prior to staining.



Negative control: IHC staining of FFPE human skeletal muscle with recombinant Mammaglobin A antibody (rMGB/6619) at 2ug/ml in PBS for 30min RT. HIER: boil tissue sections in pH 9 10mM Tris with 1mM EDTA for 20 min and allow to cool before testing.



SDS-PAGE analysis of purified, BSA-free Mammaglobin A Antibody Recombinant Mouse MAb clone rMGB/6619) as confirmation of integrity and purity.

Description

Mammaglobin A (SCGB2A2) is a secreted epithelial glycoprotein encoded by the SCGB2A2 gene and belongs to the secretoglobulin family of small secreted proteins associated with mammary epithelial differentiation. Mammaglobin A Antibody Recombinant Mouse MAb rMGB/6619 recognizes Mammaglobin A / SCGB2A2 and targets a protein widely studied as a marker of mammary epithelial cells and breast carcinoma.

Mammaglobin A antibody, also referred to as Mammaglobin antibody or SCGB2A2 antibody in the literature, detects a protein predominantly produced by luminal epithelial cells of the mammary gland. Mammaglobin A is secreted into glandular lumens as part of normal epithelial secretory activity within mammary tissue. Because of this relatively restricted tissue distribution, Mammaglobin A expression has been extensively examined in studies of mammary gland biology and breast tumor origin.

Structurally, Mammaglobin A contains conserved cysteine residues characteristic of secretoglobulin family proteins, contributing to stable folding and function within epithelial secretory pathways. As a secreted epithelial protein, Mammaglobin is typically detected in the cytoplasm of mammary epithelial cells and may also be present within luminal secretions depending on tissue architecture and experimental preparation. These localization patterns reflect the role of Mammaglobin within glandular epithelial secretory processes.

Expression of Mammaglobin A is frequently observed in breast epithelial cells and breast carcinoma specimens, where it reflects the differentiated state of mammary epithelial tumor cells. In breast tumors, Mammaglobin expression is often detected within epithelial tumor cell populations forming glandular structures, while surrounding stromal cells and non-epithelial tissue components typically show little to no staining. These expression patterns have made Mammaglobin a widely studied marker in breast cancer research and epithelial tumor characterization.

Mammaglobin A Antibody Recombinant Mouse MAb (clone rMGB/6619) is developed as a recombinant mouse monoclonal antibody designed to detect Mammaglobin A / SCGB2A2 in protein expression studies. Antibodies targeting Mammaglobin are commonly used in investigations of mammary epithelial differentiation, tumor biology, and protein localization in breast tissue and breast cancer models.

Application Notes

Optimal dilution of the Mammaglobin A Antibody Recombinant Mouse MAb should be determined by the researcher.

Immunogen

Recombinant full-length human Mammaglobin/SCGB2A2 protein was used as the immunogen for the recombinant Mammaglobin A antibody.

Storage

Aliquot the Mammaglobin A antibody and store frozen at -20oC or colder. Avoid repeated freeze-thaw cycles.

Alternate Names

Mammaglobin antibody, SCGB2A2 antibody, Mammaglobin breast marker antibody, Secretoglobin family 2A member 2 antibody, Mammary gland secretoglobin antibody