

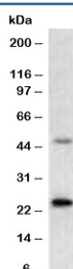
Recombinant Mammaglobin A Antibody / SCGB2A2 [clone MMGA-1R] (V7309)

Catalog No.	Formulation	Size
V7309-100UG	0.2 mg/ml in 1X PBS with 0.1 mg/ml BSA (US sourced) and 0.05% sodium azide	100 ug
V7309-20UG	0.2 mg/ml in 1X PBS with 0.1 mg/ml BSA (US sourced) and 0.05% sodium azide	20 ug
V7309SAF-100UG	1 mg/ml in 1X PBS; BSA free, sodium azide free	100 ug
V7309IHC-7ML	Prediluted in 1X PBS with 0.1 mg/ml BSA (US sourced) and 0.05% sodium azide; *For IHC use only*	7 ml

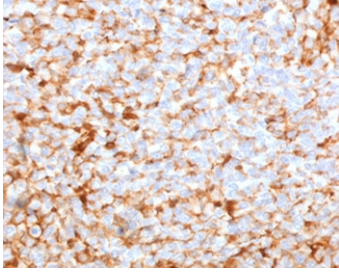
Recombinant **RABBIT MONOCLONAL**

[Bulk quote request](#)

Availability	1-3 business days
Species Reactivity	Human
Format	Purified
Clonality	Recombinant Rabbit Monoclonal
Isotype	Rabbit IgG, kappa
Clone Name	MMGA-1R
Purity	Protein A affinity chromatography
UniProt	Q13296
Localization	Cytoplasmic, cell surface, nuclear
Applications	Western Blot : 1-2ug/ml Immunohistochemistry (FFPE) : 1-2ug/ml for 30 min at RT Prediluted IHC Only Format : incubate for 30 min at RT (1)
Limitations	This recombinant Mammaglobin A antibody is available for research use only.



Western blot testing of human MCF-7 cell lysate with recombinant Mammaglobin A antibody (clone MMGA-1R). Expected molecular weight: 10-21 kDa depending on level of glycosylation.



IHC testing of FFPE human breast carcinoma stained with recombinant Mammaglobin A antibody (clone MMGA-1R). Required HIER: boiling tissue sections in 10mM citrate buffer, pH6, for 10-20 min followed by cooling prior to testing.

Description

SCGB2A2 is a member of the superfamily of secretoglobins, a group of small dimeric secreted and sometimes glycosylated proteins. Expressed mainly in mucosa, secretoglobins seem to be involved in cell signalling, immune response, and chemotaxis, and may also serve as transporters for steroid hormones in humans. SCGB2A2 expression is highly specific of mammary tissue, and is increasingly used for identification and detection of disseminated breast cancer cells.

Application Notes

The stated application concentrations are suggested starting points. Titration of the recombinant Mammaglobin A antibody may be required due to differences in protocols and secondary/substrate sensitivity.

1. The prediluted format is supplied in a dropper bottle and is optimized for use in IHC. After epitope retrieval step (if required), drip mAb solution onto the tissue section and incubate at RT for 30 min.

Immunogen

Full length recombinant human protein was used as the immunogen for the recombinant Mammaglobin A antibody.

Storage

Store the recombinant Mammaglobin A antibody at 2-8°C (with azide) or aliquot and store at -20°C or colder (without azide).