

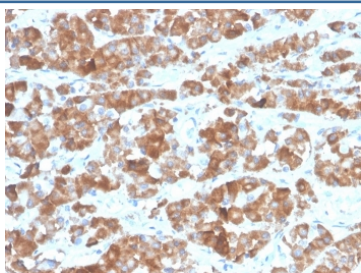
## Recombinant Luteinizing Hormone beta Antibody [clone LHb/1612R] (V9347)

Catalog No.	Formulation	Size
V9347-100UG	0.2 mg/ml in 1X PBS with 0.1 mg/ml BSA (US sourced), 0.05% sodium azide	100 ug
V9347-20UG	0.2 mg/ml in 1X PBS with 0.1 mg/ml BSA (US sourced), 0.05% sodium azide	20 ug
V9347SAF-100UG	1 mg/ml in 1X PBS; BSA free, sodium azide free	100 ug

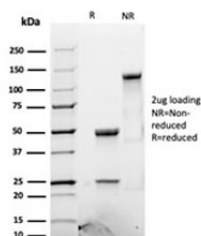
Recombinant **RABBIT MONOCLONAL**

[Bulk quote request](#)

Availability	1-3 business days
Species Reactivity	Human
Format	Purified
Clonality	Recombinant Rabbit Monoclonal
Isotype	Rabbit IgG
Clone Name	LHb/1612R
Purity	Protein A/G affinity
UniProt	P01229
Localization	Cytoplasm, Secreted
Applications	Immunohistochemistry (FFPE) : 1-2ug/ml
Limitations	This recombinant Luteinizing Hormone beta antibody is available for research use only.



IHC staining of FFPE human pituitary tissue with recombinant Luteinizing Hormone beta antibody (clone LHb/1612R). HIER: boil tissue sections in pH 9 10mM Tris with 1mM EDTA for 20 min and allow to cool before testing.



SDS-PAGE analysis of purified, BSA-free recombinant Luteinizing Hormone beta antibody (clone LHb/1612R) as confirmation of integrity and purity.

## Description

LH has a beta subunit of 121 amino acids (LHB) that confers its specific biologic action and is responsible for interaction with the LH receptor. This beta subunit contains the same amino acids in sequence as the beta subunit of hCG and both stimulate the same receptor; however, the hCG beta subunit contains an additional 24 amino acids and the hormones differ in the composition of their sugar moieties. LH is synthesized and secreted by gonadotrophs in the anterior lobe of the pituitary gland. In concert with the other pituitary gonadotropin follicle-stimulating hormone (FSH), it is necessary for proper reproductive function. In the female, an acute rise of LH levels triggers ovulation. In the male, where LH has also been called Interstitial Cell-Stimulating Hormone (ICSH), it stimulates Leydig cell production of testosterone. LH is a useful marker in classification of pituitary tumors and the study of pituitary disease.

## Application Notes

Optimal dilution of the recombinant Luteinizing Hormone beta antibody should be determined by the researcher.

## Immunogen

Recombinant full-length human LHB protein was used as the immunogen for the recombinant Luteinizing Hormone beta antibody.

## Storage

Aliquot the recombinant Luteinizing Hormone beta antibody and store frozen at -20°C or colder. Avoid repeated freeze-thaw cycles.