

## Recombinant LC3B Antibody / N-Terminal [clone RM293] (R20312)

Catalog No.	Formulation	Size
R20312-0.1ML	Antibody in PBS with 50% glycerol, 1% BSA and 0.09% sodium azide	100 ul

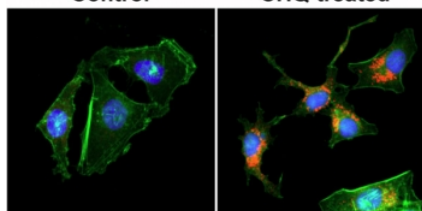
Recombinant **RABBIT MONOCLONAL**

[Bulk quote request](#)

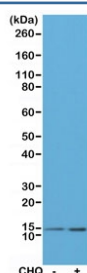
Availability	1-3 business days
Species Reactivity	Human
Format	Purified
Clonality	Recombinant Rabbit Monoclonal
Isotype	Rabbit IgG
Clone Name	RM293
Purity	Protein A purified from animal origin-free supernatant
UniProt	Q9GZQ8
Applications	Immunohistochemistry (FFPE) : 1:100-1:200 Immunocytochemistry : 1:100-1:200 Western Blot : 1:100-1:200
Limitations	This recombinant LC3B antibody is available for research use only.

**Control**

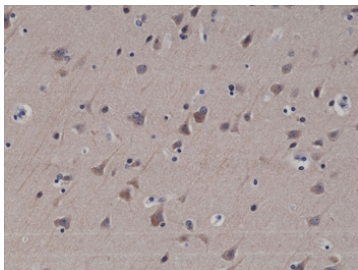
**CHQ-treated**



ICC staining of human HeLa cells untreated or treated with chloroquine (CHQ), with recombinant LC3B antibody (red) at 1:200 dilution. Actin filaments have been labeled with fluorescein phalloidin (green), and nucleus labeled with DAPI (blue).



Western blot testing of lysate from HeLa cells, untreated or treated with chloroquine (CHQ), with recombinant LC3B antibody at 1:200 dilution. Predicted molecular weight ~15 kDa.



IHC testing of formalin fixed and paraffin embedded human brain tissue with recombinant LC3B antibody at 1:200 dilution. HIER: steam section in pH6 citrate buffer for 20 min and allow to cool prior to staining.

## Description

This antibody reacts to human LC3B (Autophagy-related protein LC3 B; Microtubule-associated proteins 1A/1B light chain 3B). It may also react to mouse or rat LC3B, as predicted by immunogen homology.

## Application Notes

The stated application concentrations are suggested starting points. Titration of the recombinant LC3B antibody may be required due to differences in protocols and secondary/substrate sensitivity.

## Immunogen

A peptide corresponding to the N-terminus of human LC3B was used as the immunogen for the recombinant LC3B antibody.

## Storage

Store the recombinant LC3B antibody at -20oC.