

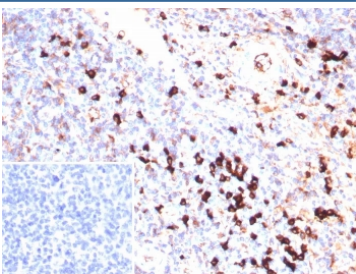
Recombinant Lambda Light Chain Antibody / IGL [clone IGL/9397R] (V5397)

Catalog No.	Formulation	Size
V5397-100UG	0.2 mg/ml in 1X PBS with 0.1 mg/ml BSA (US sourced), 0.05% sodium azide	100 ug
V5397-20UG	0.2 mg/ml in 1X PBS with 0.1 mg/ml BSA (US sourced), 0.05% sodium azide	20 ug
V5397SAF-100UG	1 mg/ml in 1X PBS; BSA free, sodium azide free	100 ug

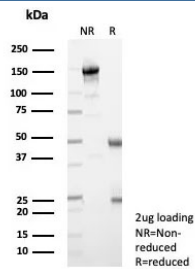
Recombinant **RABBIT MONOCLONAL**

[Bulk quote request](#)

Availability	1-3 business days
Species Reactivity	Human
Format	Purified
Host	Rabbit
Clonality	Recombinant Rabbit Monoclonal
Isotype	Rabbit IgG, kappa
Clone Name	IGL/9397R
Purity	Protein A/G affinity
UniProt	P01701, P01842
Localization	Cell Surface, Cytoplasm, Secreted
Applications	Immunohistochemistry (FFPE) : 1-2ug/ml
Limitations	This recombinant Lambda Light Chain antibody is available for research use only.



IHC staining of FFPE human tonsil tissue with recombinant Lambda Light Chain antibody (clone IGL/9397R). Inset: PBS used in place of primary Ab (secondary Ab negative control).



SDS-PAGE analysis of purified, BSA-free recombinant Lambda Light Chain antibody (clone IGL/9397R) as confirmation of integrity and purity.

Description

This MAb is specific to lambda light chain of immunoglobulin and shows no cross-reaction with lambda light chain or any of the five heavy chains. In mammals, the two light chains in an antibody are always identical, with only one type of light chain, kappa or lambda. The ratio of Kappa to Lambda is 70:30. However, with the occurrence of multiple myeloma or other B-cell malignancies this ratio is disturbed. Antibody to the lambda light chain is reportedly useful in the identification of leukemias, plasmacytomas, and certain non-Hodgkin's lymphomas. Demonstration of clonality in lymphoid infiltrates indicates that the infiltrate is malignant.

Application Notes

Optimal dilution of the recombinant Lambda Light Chain antibody should be determined by the researcher.

Immunogen

A recombinant fragment (within amino acids 1-200) of human Lambda light chain protein was used as the immunogen for the recombinant Lambda Light Chain antibody.

Storage

Aliquot the recombinant Lambda Light Chain antibody and store frozen at -20oC or colder. Avoid repeated freeze-thaw cycles.