

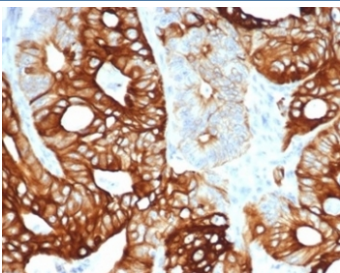
KRT20 Antibody Recombinant Rabbit MAb KRT20/4380R / Cytokeratin 20 Antibody [clone KRT20/4380R] (V9717)

Catalog No.	Formulation	Size
V9717-100UG	0.2 mg/ml in 1X PBS with 0.1 mg/ml BSA (US sourced), 0.05% sodium azide	100 ug
V9717-20UG	0.2 mg/ml in 1X PBS with 0.1 mg/ml BSA (US sourced), 0.05% sodium azide	20 ug
V9717SAF-100UG	1 mg/ml in 1X PBS; BSA free, sodium azide free	100 ug

Recombinant **RABBIT MONOCLONAL**

[Bulk quote request](#)

Availability	1-3 business days
Species Reactivity	Human
Format	Purified
Host	Rabbit
Clonality	Recombinant Rabbit Monoclonal
Isotype	Rabbit IgG, kappa
Clone Name	KRT20/4380R
Purity	Protein A/G affinity
UniProt	P35900
Localization	Cytoplasm
Applications	Immunohistochemistry (FFPE) : 1-2ug/ml
Limitations	This KRT20 antibody is available for research use only.



KRT20 Antibody Recombinant Rabbit MAb KRT20/4380R. Immunohistochemistry analysis of FFPE human colon carcinoma tissue using recombinant rabbit monoclonal KRT20 antibody (clone KRT20/4380R). HRP-DAB brown chromogenic staining highlights cytoplasmic Keratin 20 / Cytokeratin 20 (KRT20) expression in malignant epithelial cells forming glandular structures, while surrounding stromal cells remain largely negative. The staining pattern reflects the known epithelial localization of this intermediate filament protein in colorectal carcinoma. HIER: boil tissue sections in pH 9 10 mM Tris with 1 mM EDTA for 20 min and allow to cool before testing.

Description

Keratin 20 (KRT20) is a type I acidic cytokeratin that belongs to the epithelial intermediate filament family responsible for

maintaining cytoskeletal integrity and structural stability in epithelial cells. Keratin 20 is localized primarily within the cytoplasm of epithelial cells where it contributes to intermediate filament networks that support epithelial tissue architecture. KRT20 Antibody Recombinant Rabbit MAb KRT20/4380R recognizes Cytokeratin 20 and enables detection of this epithelial cytoskeletal protein in research studies examining epithelial cell identity, differentiation, and cytoskeletal organization.

Keratin 20 is encoded by the KRT20 gene located on chromosome 17q21 within a genomic cluster containing several keratin genes involved in epithelial cytoskeletal structure. The protein is widely referred to as Cytokeratin 20 or CK20 in the scientific literature. Keratin 20 forms heterodimers with type II keratins such as keratin 8, and these dimers polymerize to generate intermediate filament networks that extend throughout the cytoplasm. These filament structures provide mechanical support and help maintain the structural integrity of epithelial tissues that experience constant mechanical stress.

Keratin 20 expression is strongly associated with differentiated epithelial cell populations. High expression is observed in intestinal epithelial cells, gastric mucosa, and urothelial umbrella cells. Because of this restricted distribution pattern, Cytokeratin 20 antibody reagents are widely used as markers for epithelial lineage identification. Detection of KRT20 protein supports research examining epithelial differentiation, epithelial organization, and epithelial tissue development.

In cancer biology, Keratin 20 expression is frequently retained in tumors originating from gastrointestinal and urothelial epithelia. CK20 expression is commonly observed in colorectal carcinoma, gastric carcinoma, pancreatic carcinoma, and bladder carcinoma, where it serves as a marker of epithelial differentiation. Detection of Cytokeratin 20 therefore assists research studies investigating epithelial tumor biology, cytoskeletal organization, and tumor differentiation states.

The recombinant rabbit monoclonal antibody clone KRT20/4380R targets Keratin 20 and can be used to detect KRT20 protein in research applications involving epithelial cytoskeletal proteins. Detection of Cytokeratin 20 supports studies examining epithelial differentiation pathways, epithelial tissue organization, and epithelial tumor biology.

Application Notes

Optimal dilution of the KRT20 Antibody Recombinant Rabbit MAb KRT20/4380R should be determined by the researcher.

Immunogen

A portion of amino acids 324-424 was used as the immunogen for the recombinant KRT20 antibody.

Storage

Aliquot the KRT20 antibody and store frozen at -20oC or colder. Avoid repeated freeze-thaw cycles.

Alternate Names

Cytokeratin 20 antibody, CK20 antibody, Keratin 20 antibody, Cytokeratin-20 antibody, Keratin 20 protein antibody