

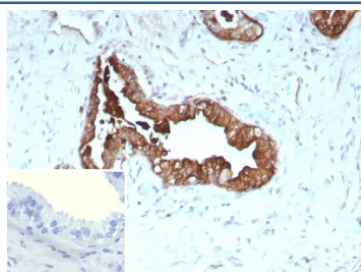
Recombinant KRT19 Antibody / Cytokeratin 19 [clone rKRT19/9108] (V5448)

Catalog No.	Formulation	Size
V5448-100UG	0.2 mg/ml in 1X PBS with 0.1 mg/ml BSA (US sourced), 0.05% sodium azide	100 ug
V5448-20UG	0.2 mg/ml in 1X PBS with 0.1 mg/ml BSA (US sourced), 0.05% sodium azide	20 ug
V5448SAF-100UG	1 mg/ml in 1X PBS; BSA free, sodium azide free	100 ug

Recombinant **MOUSE MONOCLONAL**

[Bulk quote request](#)

Availability	1-3 business days
Species Reactivity	Human
Format	Purified
Clonality	Recombinant Mouse Monoclonal
Isotype	Mouse IgG2b, kappa
Clone Name	rKRT19/9108
Purity	Protein A/G affinity
UniProt	P08727
Localization	Cytoplasm
Applications	Immunohistochemistry (FFPE) : 1-2ug/ml
Limitations	This recombinant KRT19 antibody is available for research use only.



IHC staining of FFPE human prostate cancer tissue with recombinant KRT19 antibody (clone rKRT19/9108). Inset: PBS used in place of primary Ab (secondary Ab negative control). HIER: boil tissue sections in pH 9 10mM Tris with 1mM EDTA for 20 min and allow to cool before testing.

Description

Recognizes a protein of 40kDa, identified as cytokeratin-19 (CK19), which is expressed in sweat gland, mammary gland ductal and secretory cells, bile ducts, gastrointestinal tract, bladder urothelium, oral epithelia, esophagus, and ectocervical epithelium. Anti-CK19 reacts with a wide variety of epithelial malignancies including adenocarcinomas of the colon, stomach, pancreas, biliary tract, liver, and breast. Perhaps the most useful application is the identification of thyroid

carcinoma of the papillary type, although 50%-60% of follicular carcinomas are also labeled. Anti-CK19 is a useful marker for detection of tumor cells in lymph nodes, peripheral blood, bone marrow and breast cancer.

Application Notes

Optimal dilution of the recombinant KRT19 antibody should be determined by the researcher.

Immunogen

Recombinant full-length human KRT19 protein was used as the immunogen for the recombinant KRT19 antibody.

Storage

Aliquot the recombinant KRT19 antibody and store frozen at -20oC or colder. Avoid repeated freeze-thaw cycles.