

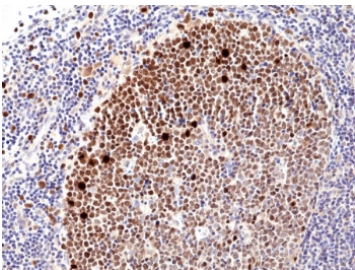
Recombinant Ki67 Antibody [clone RM360] (R20339)

Catalog No.	Formulation	Size
R20339-0.1ML	Antibody in PBS with 50% glycerol, 1% BSA and 0.09% sodium azide	100 ul

Recombinant **RABBIT MONOCLONAL**

[Bulk quote request](#)

Availability	1-3 business days
Species Reactivity	Human
Format	Purified
Clonality	Recombinant Rabbit Monoclonal
Isotype	Rabbit IgG
Clone Name	RM360
Purity	Protein A purified from animal origin-free supernatant
UniProt	P46013
Gene ID	4288
Localization	Nuclear
Applications	Immunohistochemistry (FFPE) : 1:500-1:1000 Western Blot : 1:1000-1:2000
Limitations	This recombinant Ki67 antibody is available for research use only.



IHC testing of FFPE human tonsil tissue with recombinant Ki67 antibody. HIER: boil tissue sections in pH6, 10mM citrate buffer, for 10-20 min and allow to cool before testing.

Description

This recombinant Ki67 antibody reacts to Human Antigen KI-67.

Application Notes

The stated application concentrations are suggested starting points. Titration of the recombinant Ki67 antibody may be

required due to differences in protocols and secondary/substrate sensitivity.

Immunogen

A peptide corresponding to the internal region of human Ki67 was used as the immunogen for this recombinant Ki67 antibody.

Storage

Store the recombinant Ki67 antibody at -20oC.