

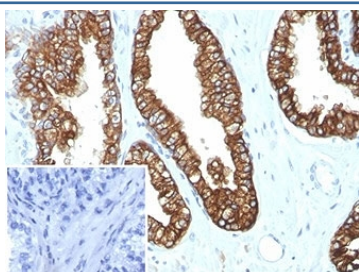
Recombinant Keratin 8/18 Antibody [clone KRT8.18/4997R] (V4066)

| Catalog No. | Formulation | Size |
|----------------|---|--------|
| V4066-100UG | 0.2 mg/ml in 1X PBS with 0.1 mg/ml BSA (US sourced), 0.05% sodium azide | 100 ug |
| V4066-20UG | 0.2 mg/ml in 1X PBS with 0.1 mg/ml BSA (US sourced), 0.05% sodium azide | 20 ug |
| V4066SAF-100UG | 1 mg/ml in 1X PBS; BSA free, sodium azide free | 100 ug |

Recombinant **RABBIT MONOCLONAL**

[Bulk quote request](#)

| | |
|---------------------------|--|
| Availability | 1-3 business days |
| Species Reactivity | Human |
| Format | Purified |
| Clonality | Recombinant Rabbit Monoclonal |
| Isotype | Rabbit IgG, kappa |
| Clone Name | KRT8.18/4997R |
| Purity | Protein A/G affinity |
| UniProt | P05787, P05783 |
| Localization | Cytoplasm |
| Applications | Immunohistochemistry (FFPE) : 1-2ug/ml |
| Limitations | This recombinant Keratin 8/18 antibody is available for research use only. |



IHC staining of FFPE human prostate carcinoma tissue with recombinant Keratin 8/18 antibody (clone KRT8.18/4997R). Negative control inset: PBS used instead of primary antibody to control for secondary Ab binding. HIER: boil tissue sections in pH 9 10mM Tris with 1mM EDTA for 20 min and allow to cool before testing.

Description

Cytokeratin 8 (CK8) belongs to the type II (or B or basic) subfamily of high molecular weight cytokeratins and exists in combination with cytokeratin 18 (CK18). This MAb cocktail recognizes all simple epithelia including glandular epithelium, for example thyroid, female breast, gastrointestinal tract, respiratory tract, and urogenital tract including transitional epithelium. All adenocarcinomas and most squamous carcinomas are positive but keratinizing squamous carcinomas are

usually negative. This antibody is useful in demonstrating the presence of Paget cells; there is very little keratin 18 in the normal epidermis so only Paget cells are stained. Immunohistochemical staining with this MAb is indistinguishable from that obtained with monoclonal antibody 5D3.

Application Notes

Optimal dilution of the recombinant Keratin 8/18 antibody should be determined by the researcher.

Immunogen

Recombinant full-length human CK8 and CK18 proteins were used as the immunogen for the recombinant Keratin 8/18 antibody.

Storage

Aliquot the recombinant Keratin 8/18 antibody and store frozen at -20°C or colder. Avoid repeated freeze-thaw cycles.