

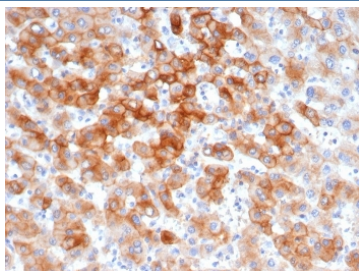
Recombinant Keratin 8 Antibody / Cytokeratin 8 [clone KRT8/6472R] (V9325)

| Catalog No. | Formulation | Size |
|----------------|---|--------|
| V9325-100UG | 0.2 mg/ml in 1X PBS with 0.1 mg/ml BSA (US sourced), 0.05% sodium azide | 100 ug |
| V9325-20UG | 0.2 mg/ml in 1X PBS with 0.1 mg/ml BSA (US sourced), 0.05% sodium azide | 20 ug |
| V9325SAF-100UG | 1 mg/ml in 1X PBS; BSA free, sodium azide free | 100 ug |

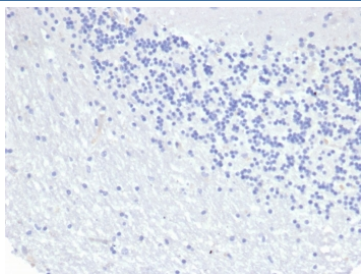
Recombinant **RABBIT MONOCLONAL**

[Bulk quote request](#)

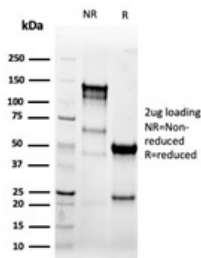
| | |
|--------------------|---|
| Availability | 1-3 business days |
| Species Reactivity | Human |
| Format | Purified |
| Host | Rabbit |
| Clonality | Recombinant Rabbit Monoclonal |
| Isotype | Rabbit IgG |
| Clone Name | KRT8/6472R |
| Purity | Protein A/G affinity |
| UniProt | P05787 |
| Localization | Cytoplasmic |
| Applications | Western Blot : 1-2ug/ml Immunohistochemistry (FFPE) : 1-2ug/ml |
| Limitations | This recombinant Keratin 8 antibody is available for research use only. |



IHC staining of FFPE human colon tissue with recombinant Keratin 8 antibody (clone KRT8/6472R). HIER: boil tissue sections in pH 9 10mM Tris with 1mM EDTA for 20 min and allow to cool before testing.



Negative control: IHC staining of FFPE human brain tissue using recombinant Keratin 8 antibody (clone KRT8/6472R) at 2ug/ml in PBS for 30min RT. HIER: boil tissue sections in pH 9 10mM Tris with 1mM EDTA for 20 min and allow to cool before testing.



SDS-PAGE analysis of purified, BSA-free recombinant Keratin 8 antibody (clone KRT8/6472R) as confirmation of integrity and purity.

Description

Cytokeratin 8 (also called CK8, Keratin 8 and KRT8) belongs to the type II (or B or basic) subfamily of high molecular weight cytokeratins and exists in combination with cytokeratin 18 (CK18). CK8 is primarily found in the non-squamous epithelia and is present in majority of adenocarcinomas and ductal carcinomas. It is absent in squamous cell carcinomas. Hepatocellular carcinomas are defined by the use of antibodies that recognize only cytokeratin 8 and 18. CK8 exists on several types of normal and neoplastic epithelia, including many ductal and glandular epithelia such as colon, stomach, small intestine, trachea, and esophagus as well as in transitional epithelium.

Application Notes

Optimal dilution of the recombinant Keratin 8 antibody should be determined by the researcher.

Immunogen

Recombinant full-length human KRT8 protein was used as the immunogen for the recombinant Keratin 8 antibody.

Storage

Aliquot the recombinant Keratin 8 antibody and store frozen at -20oC or colder. Avoid repeated freeze-thaw cycles.