

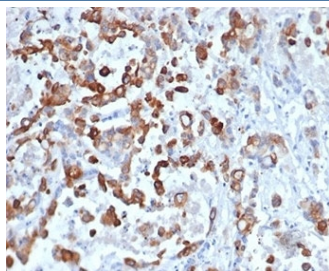
Recombinant Keratin 20 Antibody / CK20 / Cytokeratin 20 [clone KRT20/4879R] (V9328)

Catalog No.	Formulation	Size
V9328-100UG	0.2 mg/ml in 1X PBS with 0.1 mg/ml BSA (US sourced), 0.05% sodium azide	100 ug
V9328-20UG	0.2 mg/ml in 1X PBS with 0.1 mg/ml BSA (US sourced), 0.05% sodium azide	20 ug
V9328SAF-100UG	1 mg/ml in 1X PBS; BSA free, sodium azide free	100 ug

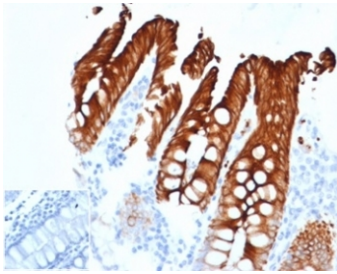
Recombinant **RABBIT MONOCLONAL**

[Bulk quote request](#)

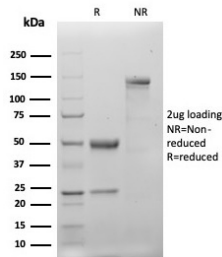
Availability	1-3 business days
Species Reactivity	Human
Format	Purified
Host	Rabbit
Clonality	Recombinant Rabbit Monoclonal
Isotype	Rabbit IgG, kappa
Clone Name	KRT20/4879R
Purity	Protein A/G affinity
UniProt	P35900
Localization	Cytoplasmic
Applications	Immunohistochemistry (FFPE) : 2-4ug/ml Western Blot : 2-4ug/ml
Limitations	This recombinant Keratin 20 antibody is available for research use only.



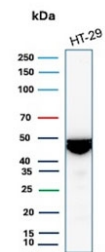
IHC staining of FFPE human colon tissue with recombinant Keratin 20 antibody (clone KRT20/4879R) at 2ug/ml. HIER: boil tissue sections in pH 9 10mM Tris with 1mM EDTA for 20 min and allow to cool before testing.



IHC staining of FFPE human colon carcinoma tissue with recombinant Keratin 20 antibody (clone KRT20/4879R) at 2ug/ml. Inset: PBS instead of primary Ab to control for secondary Ab binding. HIER: boil tissue sections in pH 9 10mM Tris with 1mM EDTA for 20 min and allow to cool before testing.



SDS-PAGE analysis of purified, BSA-free recombinant Keratin 20 antibody (clone KRT20/4879R) as confirmation of integrity and purity.



Western blot testing of human HT29 cell lysate with recombinant Keratin 20 antibody. Predicted molecular weight ~46 kDa.

Description

This MAb recognizes an intermediate filament protein of 46kDa, identified as cytokeratin 20 (KRT20). KRT20 is abundantly expressed in goblet cells and enterocytes of the gastrointestinal tract. It is a useful marker of pancreatic and colorectal cancer. KRT20 is expressed under normal, hyperplastic and neoplastic conditions. It has been detected in adenocarcinomas of the colon, stomach and biliary tract. Breast carcinomas are generally non-reactive.

Application Notes

Optimal dilution of the recombinant Keratin 20 antibody should be determined by the researcher.

Immunogen

A portion of amino acids 196-323 was used as the immunogen for the recombinant Keratin 20 antibody.

Storage

Aliquot the recombinant Keratin 20 antibody and store frozen at -20oC or colder. Avoid repeated freeze-thaw cycles.

