

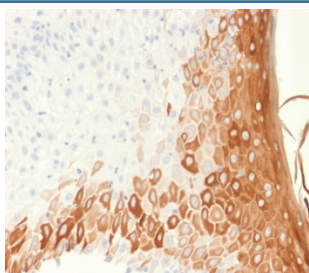
## Recombinant Keratin 10 Antibody [clone rKRT10/1275] (V3602)

Catalog No.	Formulation	Size
V3602-100UG	0.2 mg/ml in 1X PBS with 0.1 mg/ml BSA (US sourced) and 0.05% sodium azide	100 ug
V3602-20UG	0.2 mg/ml in 1X PBS with 0.1 mg/ml BSA (US sourced) and 0.05% sodium azide	20 ug
V3602SAF-100UG	1 mg/ml in 1X PBS; BSA free, sodium azide free	100 ug
V3602IHC-7ML	Prediluted in 1X PBS with 0.1 mg/ml BSA (US sourced) and 0.05% sodium azide; *For IHC use only*	7 ml

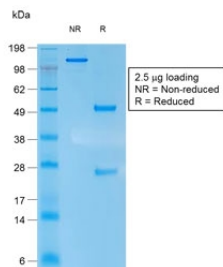
Recombinant **MOUSE MONOCLONAL**

[Bulk quote request](#)

Availability	1-3 business days
Species Reactivity	Human
Format	Purified
Host	Mouse
Clonality	Recombinant Mouse Monoclonal
Isotype	Mouse IgG1, kappa
Clone Name	rKRT10/1275
Purity	Protein G affinity chromatography
UniProt	P13645
Localization	Cytoplasmic
Applications	Immunohistochemistry (FFPE) : 0.1-0.2ug/ml for 30 min at RT
Limitations	This recombinant Keratin 10 antibody is available for research use only.



IHC testing of FFPE human skin with recombinant Keratin 10 antibody (clone rKRT10/1275). Required HIER: boil tissue sections in pH6, 10mM citrate buffer, for 10-20 min followed by cooling at RT for 20 min.



SDS-PAGE analysis of purified, BSA-free recombinant Keratin 10 antibody (clone rKRT10/1275) as confirmation of integrity and purity.

## Description

This mAb recognizes a protein of 56.5kDa, identified as cytokeratin 10 (CK10). CK10 is expressed in all suprabasal layers of the epidermis. In the epidermis, expression of CK10 strictly parallels the extent of differentiation; it is absent in the basal layer, appears in the first suprabasal layers and increases in concentration towards the granular layer. However, CK10 is rarely detected in early stages of vulvar squamous carcinomas (tumors less than 2 cm, clinical stage I) regardless of the tumor grade. In larger and more advanced tumors (greater than 2 cm, clinical stages II and III), CK10 is detected very frequently. Expression of CK10 is related to maturation of malignant keratinocytes, being preferentially detected in more-differentiated parts.

## Application Notes

Optimal dilution of the recombinant Keratin 10 antibody should be determined by the researcher.

1. The prediluted format is supplied in a dropper bottle and is optimized for use in IHC. After epitope retrieval step (if required), drip mAb solution onto the tissue section and incubate at RT for 30 min.

## Immunogen

Recombinant human Cytokeratin 10 protein was used as the immunogen for the recombinant Keratin 10 antibody.

## Storage

Store the recombinant Keratin 10 antibody at 2-8oC (with azide) or aliquot and store at -20oC or colder (without azide).