

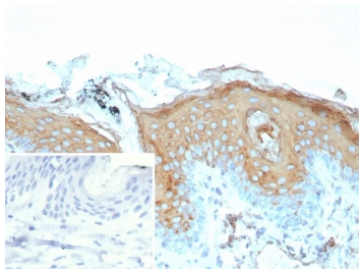
Recombinant IVL Antibody / Involucrin [clone rIVRN/9323] (V5442)

Catalog No.	Formulation	Size
V5442-100UG	0.2 mg/ml in 1X PBS with 0.1 mg/ml BSA (US sourced), 0.05% sodium azide	100 ug
V5442-20UG	0.2 mg/ml in 1X PBS with 0.1 mg/ml BSA (US sourced), 0.05% sodium azide	20 ug
V5442SAF-100UG	1 mg/ml in 1X PBS; BSA free, sodium azide free	100 ug

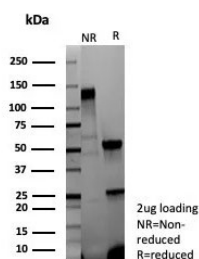
Recombinant **MOUSE MONOCLONAL**

[Bulk quote request](#)

Availability	1-3 business days
Species Reactivity	Human
Format	Purified
Host	Mouse
Clonality	Recombinant Mouse Monoclonal
Isotype	Mouse IgG2b, kappa
Clone Name	rIVRN/9323
Purity	Protein A/G affinity
UniProt	P07476
Localization	Cytoplasm
Applications	Immunohistochemistry (FFPE) : 1-2ug/ml
Limitations	This recombinant IVL antibody is available for research use only.



IHC staining of FFPE human skin tissue with recombinant IVL antibody (clone rIVRN/9323). Inset: PBS used in place of primary Ab (secondary Ab negative control).
HIER: boil tissue sections in pH 9 10mM Tris with 1mM EDTA for 20 min and allow to cool before testing.



SDS-PAGE analysis of purified, BSA-free recombinant IVL antibody (clone rIVRN/9323) as confirmation of integrity and purity.

Description

It recognizes a protein of 66kDa-170kDa, identified as involucrin. In Western blotting of cultured human keratinocytes, this MAb reacts with a 120kDa protein. It stains the involucrin in a variety of sizes: 170kDa in MCF-7 cells, a doublet of ~115kDa and 150kDa in gorilla and owl monkey, 66kDa in dog, and a doublet of 105kDa in pig. Its epitope maps between codon 421-568 of human involucrin. Involucrin is expressed in a range of stratified squamous epithelia, including the cornea, which lacks a distinct cornified layer. In normal epidermis, it is first expressed in the upper spinous layers, and in keratinocyte cultures, all cells that have left the basal layer express it. Involucrin expression is altered in pathological conditions: in psoriasis and other benign epidermal hyperplasias, involucrin expression begins closer to the basal layer than normal; expression is abnormal in squamous cell carcinomas and premalignant lesions, and is reduced in severe dysplasias of the larynx and cervix.

Application Notes

Optimal dilution of the recombinant IVL antibody should be determined by the researcher.

Immunogen

Recombinant human full-length Involucrin protein was used as the immunogen for the recombinant IVL antibody.

Storage

Aliquot the recombinant IVL antibody and store frozen at -20oC or colder. Avoid repeated freeze-thaw cycles.