

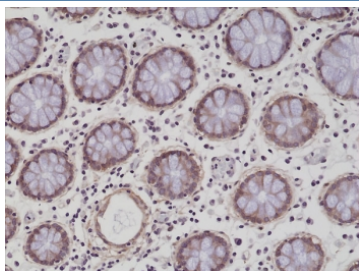
Recombinant ITGB1 Antibody / Integrin beta 1 / CD29 [clone RM285] (R20311)

Catalog No.	Formulation	Size
R20311-0.1ML	Antibody in PBS with 50% glycerol, 1% BSA and 0.09% sodium azide	100 ul

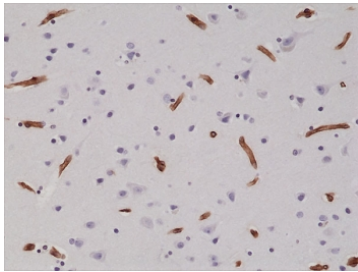
Recombinant **RABBIT MONOCLONAL**

[Bulk quote request](#)

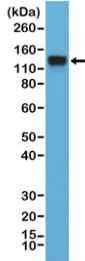
Availability	1-3 business days
Species Reactivity	Human
Format	Purified
Host	Rabbit
Clonality	Recombinant Rabbit Monoclonal
Isotype	Rabbit IgG
Clone Name	RM285
Purity	Protein A purified from animal origin-free supernatant
UniProt	P05556
Localization	Cell membrane, cytoplasm
Applications	Immunohistochemistry (FFPE) : 1:100-1:200 Western Blot : 1:2000-1:4000
Limitations	This recombinant ITGB1 antibody is available for research use only.



IHC testing of formalin fixed and paraffin embedded human colon tissue with recombinant ITGB1 antibody at 1:200 dilution. HIER: steam section in pH6 citrate buffer for 20 min and allow to cool prior to staining.



IHC testing of formalin fixed and paraffin embedded human brain tissue with recombinant ITGB1 antibody at 1:200 dilution. HIER: steam section in pH6 citrate buffer for 20 min and allow to cool prior to staining.



Western blot testing of human HeLa cell lysate with recombinant ITGB1 antibody at 1:4000 dilution. Predicted molecular weight: 88-150 kDa depending on glycosylation level.

Description

This antibody reacts to human Integrin beta-1 (ITGB1, CD29).

Application Notes

The stated application concentrations are suggested starting points. Titration of the recombinant ITGB1 antibody may be required due to differences in protocols and secondary/substrate sensitivity.

Immunogen

A peptide corresponding to the residues in human Integrin beta-1 was used as the immunogen for the recombinant ITGB1 antibody.

Storage

Store the recombinant ITGB1 antibody at -20°C.