

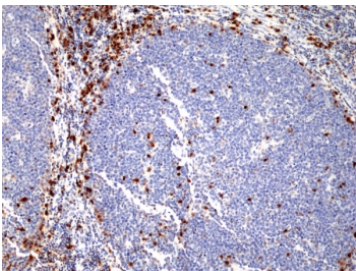
Recombinant IRF4 Antibody / Interferon regulatory factor 4 [clone RM352] (R20374)

Catalog No.	Formulation	Size
R20374-0.1ML	Antibody in PBS with 50% glycerol, 1% BSA and 0.09% sodium azide	100 ul

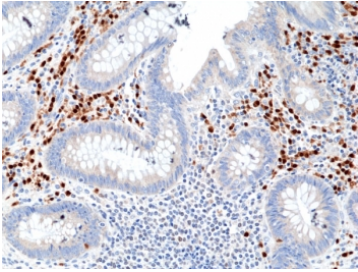
Recombinant **RABBIT MONOCLONAL**

[Bulk quote request](#)

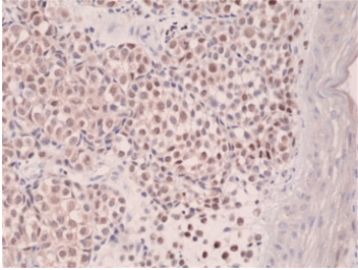
Availability	1-3 business days
Species Reactivity	Human
Format	Purified
Host	Rabbit
Clonality	Recombinant Rabbit Monoclonal
Isotype	Rabbit IgG
Clone Name	RM352
Purity	Protein A purified from animal origin-free supernatant
UniProt	Q15306
Localization	Nuclear
Applications	Immunohistochemistry (FFPE) : 1:200-1:800 Western Blot : 1:1000-1:2000
Limitations	This recombinant IRF4 antibody is available for research use only.



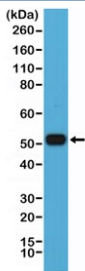
IHC staining of FFPE human tonsil tissue with recombinant IRF4 antibody at 1:800.



IHC staining of FFPE human appendix tissue with recombinant IRF4 antibody at 1:800.



IHC staining of FFPE human melanoma tissue with recombinant IRF4 antibody at 1:250.



Western blot testing of human Raji cell lysate with recombinant IRF4 antibody at 1:2000 dilution. Predicted molecular weight ~51 kDa.

Description

This antibody reacts to human MUM1/IRF4 (Interferon regulatory factor 4).

Application Notes

The stated application concentrations are suggested starting points. Titration of the recombinant IRF4 antibody may be required due to differences in protocols and secondary/substrate sensitivity.

Immunogen

A peptide corresponding to the C-terminus of human MUM1/IRF4 was used as the immunogen for the recombinant IRF4 antibody.

Storage

Store the recombinant IRF4 antibody at -20oC.