

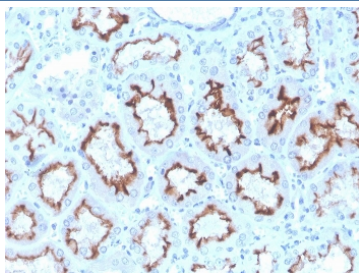
Recombinant Interferon gamma Antibody [clone rIFNG/4467] (V8487)

Catalog No.	Formulation	Size
V8487-100UG	0.2 mg/ml in 1X PBS with 0.1 mg/ml BSA (US sourced) and 0.05% sodium azide	100 ug
V8487-20UG	0.2 mg/ml in 1X PBS with 0.1 mg/ml BSA (US sourced) and 0.05% sodium azide	20 ug
V8487SAF-100UG	1 mg/ml in 1X PBS; BSA free, sodium azide free	100 ug

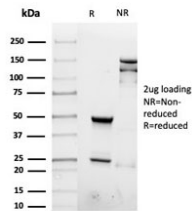
Recombinant **MOUSE MONOCLONAL**

[Bulk quote request](#)

Availability	1-3 business days
Species Reactivity	Human
Format	Purified
Host	Mouse
Clonality	Recombinant Mouse Monoclonal
Isotype	Mouse IgG2a, kappa
Clone Name	rIFNG/4467
Purity	Protein G affinity chromatography
UniProt	P01579
Localization	Cytoplasmic & Cell surface
Applications	Immunohistochemistry (FFPE) : 1-2ug/ml for 30 minutes at RT
Limitations	This recombinant Interferon gamma antibody is available for research use only.



IHC staining of FFPE human kidney with recombinant Interferon gamma antibody. HIER: boil tissue sections in pH 9 10mM Tris with 1mM EDTA for 20 min and allow to cool before testing.



SDS-PAGE analysis of purified, BSA-free recombinant Interferon gamma antibody as confirmation of integrity and purity.

Description

Recognizes a protein of 20-25kDa, identified as human interferon. This MAb is specific to human IFN γ , and recognizes both recombinant and native human IFN gamma.

Application Notes

Optimal dilution of the recombinant Interferon gamma antibody should be determined by the researcher.

Immunogen

Purified recombinant human full-length protein was used as the immunogen for the recombinant Interferon gamma antibody.

Storage

Store the recombinant Interferon gamma antibody at 2-8°C (with azide) or aliquot and store at -20°C or colder (without azide).