

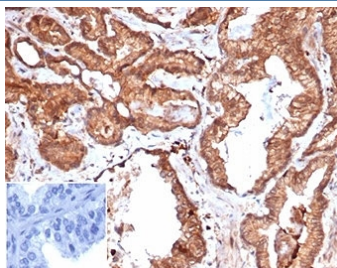
Recombinant Integrin Associated Protein Antibody / IAP / CD47 [clone rCD47/6365] (V9335)

Catalog No.	Formulation	Size
V9335-100UG	0.2 mg/ml in 1X PBS with 0.1 mg/ml BSA (US sourced), 0.05% sodium azide	100 ug
V9335-20UG	0.2 mg/ml in 1X PBS with 0.1 mg/ml BSA (US sourced), 0.05% sodium azide	20 ug
V9335SAF-100UG	1 mg/ml in 1X PBS; BSA free, sodium azide free	100 ug

Recombinant MOUSE MONOCLONAL

[Bulk quote request](#)

Availability	1-3 business days
Species Reactivity	Human
Format	Purified
Host	Mouse
Clonality	Recombinant Mouse Monoclonal
Isotype	Mouse IgG1, kappa
Clone Name	rCD47/6365
Purity	Protein A/G affinity
UniProt	Q08722
Localization	Cell surface, cytoplasmic
Applications	Immunohistochemistry (FFPE) : 1-2ug/ml
Limitations	This recombinant Integrin Associated Protein antibody is available for research use only.



IHC staining of FFPE human prostate carcinoma tissue with recombinant Integrin Associated Protein antibody (clone rCD47/6365). Negative control inset: PBS instead of primary antibody to control for secondary binding. HIER: boil tissue sections in pH 9 10mM Tris with 1mM EDTA for 20 min and allow to cool before testing.

Description

This antibody reacts with Ig domain of CD47/Integrin Associated Protein/IAP protein. It has been shown to inhibit

polymorphonuclear neutrophil (PMN) transmigration across cell monolayers and matrix. CD47, originally named integrin-associated protein (IAP), is a 50kDa protein containing five membrane-spanning sequences and a short cytoplasmic tail. It plays a role in both cell adhesion by acting as an adhesion receptor for THBS1 on platelets, and in the modulation of integrins. It is important in memory formation and synaptic plasticity in the hippocampus. CD47/IAP may play a role in membrane transport and/or integrin dependent signal transduction.

Application Notes

Optimal dilution of the recombinant Integrin Associated Protein antibody should be determined by the researcher.

Immunogen

Recombinant full-length human protein was used as the immunogen for the recombinant Integrin Associated Protein antibody.

Storage

Aliquot the recombinant Integrin Associated Protein antibody and store frozen at -20oC or colder. Avoid repeated freeze-thaw cycles.