

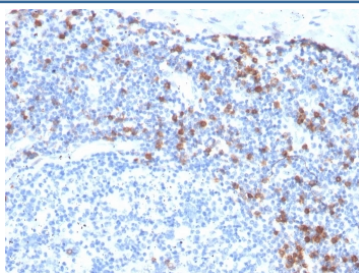
Recombinant Integrin alpha E Antibody / CD103 [clone ITGAE/3904R] (V8419)

Catalog No.	Formulation	Size
V8419-100UG	0.2 mg/ml in 1X PBS with 0.1 mg/ml BSA (US sourced) and 0.05% sodium azide	100 ug
V8419-20UG	0.2 mg/ml in 1X PBS with 0.1 mg/ml BSA (US sourced) and 0.05% sodium azide	20 ug
V8419SAF-100UG	1 mg/ml in 1X PBS; BSA free, sodium azide free	100 ug

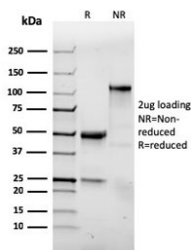
Recombinant **RABBIT MONOCLONAL**

[Bulk quote request](#)

Availability	1-3 business days
Species Reactivity	Human
Format	Purified
Clonality	Recombinant Rabbit Monoclonal
Isotype	Rabbit IgG
Clone Name	ITGAE/3904R
Purity	Protein A affinity chromatography
UniProt	P38570
Localization	Cell surface and cytoplasm
Applications	Immunohistochemistry (FFPE) : 1-2ug/ml for 30 minutes at RT
Limitations	This recombinant Integrin alpha E antibody is available for research use only.



IHC staining of FFPE human tonsil with recombinant Integrin alpha E antibody (clone ITGAE/3904R). HIER: boil tissue sections in pH 9 10mM Tris with 1mM EDTA for 20 min and allow to cool before testing.



SDS-PAGE analysis of purified, BSA-free recombinant Integrin alpha E antibody (clone ITGAE/3904R) as confirmation of integrity and purity.

Description

This MAb recognizes a protein of 150kDa, identified as CD103, which is the alpha-E integrin subunit of the heterodimeric alpha-E beta-7 (aEb7) integrin belonging to a small beta-7 integrin subfamily. CD103 is expressed on more than 95% of intraepithelial CD8+ cells and on 40% of mucosa-associated T cells, whereas less than 2% of resting blood lymphocytes are CD103-positive. In several malignant conditions, such as T-cell lymphomas and hairy cell leukemia (HCL), the cells express CD103. Antibody to CD103 is an extremely useful addition to the IHC panel for the diagnosis of hairy cell leukemia (HCL).

Application Notes

Optimal dilution of the recombinant Integrin alpha E antibody should be determined by the researcher.

Immunogen

Recombinant human ITGAE partial protein was used as the immunogen for the Integrin alpha E antibody.

Storage

Store the recombinant Integrin alpha E antibody at 2-8oC (with azide) or aliquot and store at -20oC or colder (without azide).