

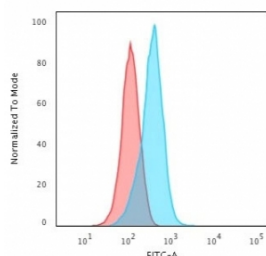
Recombinant Insulin-like Growth Factor 1 Antibody / IGF-1 [clone IGF1/2872R] (V8046)

Catalog No.	Formulation	Size
V8046-100UG	0.2 mg/ml in 1X PBS with 0.1 mg/ml BSA (US sourced) and 0.05% sodium azide	100 ug
V8046-20UG	0.2 mg/ml in 1X PBS with 0.1 mg/ml BSA (US sourced) and 0.05% sodium azide	20 ug
V8046SAF-100UG	1 mg/ml in 1X PBS; BSA free, sodium azide free	100 ug

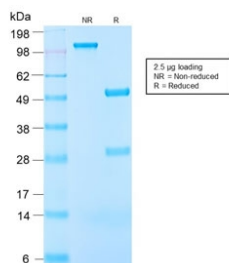
Recombinant **RABBIT MONOCLONAL**

[Bulk quote request](#)

Availability	1-3 business days
Species Reactivity	Human, Mouse, Rat
Format	Purified
Host	Rabbit
Clonality	Recombinant Rabbit Monoclonal
Isotype	Rabbit IgG
Clone Name	IGF1/2872R
Purity	Protein A affinity chromatography
UniProt	P05019
Applications	Flow Cytometry : 1-2ug/10 ⁶ cells in 0.1ml
Limitations	This recombinant Insulin-like Growth Factor 1 antibody is available for research use only.



Flow cytometry testing of human K562 cells with recombinant Insulin-like Growth Factor 1 antibody (clone IGF1/2872R); Red=isotype control, Blue= recombinant Insulin-like Growth Factor 1 antibody.



SDS-PAGE analysis of purified, BSA-free recombinant Insulin-like Growth Factor 1 antibody (clone IGF1/2872R) as confirmation of integrity and purity.

Description

This antibody is specific to Insulin-like Growth Factor (IGF-1) and shows minimal cross-reaction with IGF-11, Proinsulin, MSF, and Insulin. IGF-1 is a polypeptide growth factor with two isoforms that are produced by alternative splicing. Isoform 1 is also known as IGF-1B while isoform 2 is known as IGF-1A. IGF-1 stimulates the proliferation of a wide range of cell types including muscle, bone and cartilage tissue. It functions as an autocrine regulator of growth. Activation of IGF system has emerged as a key factor for tumor progression and resistance to apoptosis in many cancers like those of breast, thyroid and colon.

Application Notes

Optimal dilution of the recombinant Insulin-like Growth Factor 1 antibody should be determined by the researcher.

Immunogen

Recombinant full-length human protein was used as the immunogen for the recombinant Insulin-like Growth Factor 1 antibody.

Storage

Store the recombinant Insulin-like Growth Factor 1 antibody at 2-8°C (with azide) or aliquot and store at -20°C or colder (without azide).