

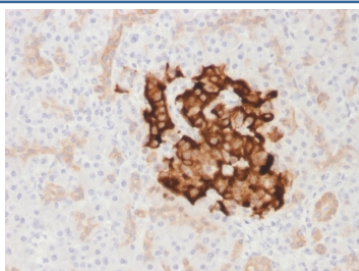
## Recombinant INS Antibody / Insulin [clone IRDN/1980R] (V3617)

Catalog No.	Formulation	Size
V3617-100UG	0.2 mg/ml in 1X PBS with 0.1 mg/ml BSA (US sourced) and 0.05% sodium azide	100 ug
V3617-20UG	0.2 mg/ml in 1X PBS with 0.1 mg/ml BSA (US sourced) and 0.05% sodium azide	20 ug
V3617SAF-100UG	1 mg/ml in 1X PBS; BSA free, sodium azide free	100 ug
V3617IHC-7ML	Prediluted in 1X PBS with 0.1 mg/ml BSA (US sourced) and 0.05% sodium azide; *For IHC use only*	7 ml

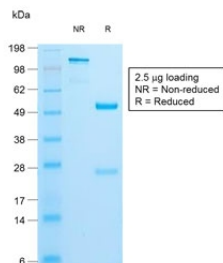
Recombinant **RABBIT MONOCLONAL**

[Bulk quote request](#)

<b>Availability</b>	1-3 business days
<b>Species Reactivity</b>	Human, Mouse
<b>Format</b>	Purified
<b>Clonality</b>	Recombinant Rabbit Monoclonal
<b>Isotype</b>	Rabbit IgG, kappa
<b>Clone Name</b>	IRDN/1980R
<b>Purity</b>	Protein A affinity chromatography
<b>UniProt</b>	P01308
<b>Localization</b>	Cytoplasmic
<b>Applications</b>	Immunohistochemistry (FFPE) : 0.5-1ug/ml for 30 min at RT
<b>Limitations</b>	This recombinant INS antibody is available for research use only.



IHC testing of FFPE human pancreas with recombinant INS antibody (clone IRDN/1980R). Required HIER: boil tissue sections in pH6, 10mM citrate buffer, for 10-20 min followed by cooling at RT for 20 min.



SDS-PAGE analysis of purified, BSA-free recombinant INS antibody (clone IRDN/1980R) as confirmation of integrity and purity.

## Description

Insulin decreases blood glucose concentration. It increases cell permeability to monosaccharides, amino acids and fatty acids. It accelerates glycolysis, the pentose phosphate cycle, and glycogen synthesis in liver. [UniProt]

## Application Notes

Optimal dilution of the recombinant INS antibody should be determined by the researcher.

1. The prediluted format is supplied in a dropper bottle and is optimized for use in IHC. After epitope retrieval step (if required), drip mAb solution onto the tissue section and incubate at RT for 30 min.

## Immunogen

Purified pig insulin conjugated to KLH was used as the immunogen for the recombinant INS antibody.

## Storage

Store the recombinant INS antibody at 2-8oC (with azide) or aliquot and store at -20oC or colder (without azide).