

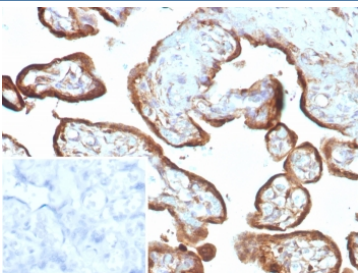
## Recombinant IMP3 Antibody / Insulin like growth factor 2 mRNA binding protein 3 [clone IMP3/8985R] (V4395)

Catalog No.	Formulation	Size
V4395-100UG	0.2 mg/ml in 1X PBS with 0.1 mg/ml BSA (US sourced), 0.05% sodium azide	100 ug
V4395-20UG	0.2 mg/ml in 1X PBS with 0.1 mg/ml BSA (US sourced), 0.05% sodium azide	20 ug
V4395SAF-100UG	1 mg/ml in 1X PBS; BSA free, sodium azide free	100 ug

Recombinant **RABBIT MONOCLONAL**

[Bulk quote request](#)

<b>Availability</b>	1-3 business days
<b>Species Reactivity</b>	Human
<b>Format</b>	Purified
<b>Host</b>	Rabbit
<b>Clonality</b>	Recombinant Rabbit Monoclonal
<b>Isotype</b>	Rabbit IgG, kappa
<b>Clone Name</b>	IMP3/8985R
<b>Purity</b>	Protein A/G affinity
<b>UniProt</b>	Q9NV31
<b>Localization</b>	Nucleus
<b>Applications</b>	Immunohistochemistry (FFPE) : 1-2ug/ml for 30 minutes at RT
<b>Limitations</b>	This recombinant IMP3 antibody is available for research use only.



IHC staining of FFPE human placental tissue with recombinant IMP3 antibody (clone IMP3/8985R) Inset: PBS used in place of primary Ab (secondary Ab negative control).  
 HIER: boil tissue sections in pH 9 10mM Tris with 1mM EDTA for 20 min and allow to cool before testing.

### Description

Imp3, also known as BRMS2, C15orf12 or MRPS4, is a 184 amino acid protein that contains one S4 RNA-binding domain

and is the mammalian homolog of the yeast Imp3 protein. Localized to the nucleus, Imp3 exists as a component of a heterotrimeric complex consisting of MPP10, Imp3 and Imp4 and, in this complex, plays a key role in early cleavage events during pre-18S ribosomal processing. The gene encoding Imp3 maps to human chromosome 15, which houses over 700 genes and comprises nearly 3% of the human genome. Angelman syndrome, Prader-Willi syndrome, Tay-Sachs disease and Marfan syndrome are all associated with defects in chromosome 15-localized genes.

## **Application Notes**

Optimal dilution of the recombinant IMP3 antibody should be determined by the researcher.

## **Immunogen**

A recombinant fragment of human protein was used as the immunogen for the recombinant IMP3 antibody.

## **Storage**

Aliquot the recombinant IMP3 antibody and store frozen at -20oC or colder. Avoid repeated freeze-thaw cycles.