

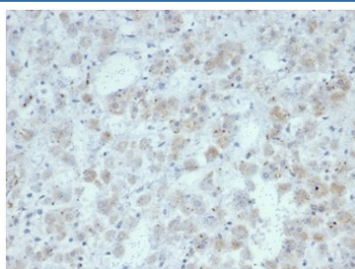
Recombinant IL15 Antibody / Interleukin 15 [clone IL15/7048R] (V9660)

Catalog No.	Formulation	Size
V9660-100UG	0.2 mg/ml in 1X PBS with 0.1 mg/ml BSA (US sourced), 0.05% sodium azide	100 ug
V9660-20UG	0.2 mg/ml in 1X PBS with 0.1 mg/ml BSA (US sourced), 0.05% sodium azide	20 ug
V9660SAF-100UG	1 mg/ml in 1X PBS; BSA free, sodium azide free	100 ug

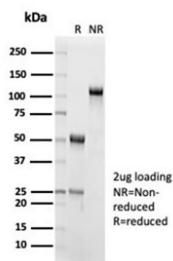
Recombinant **RABBIT MONOCLONAL**

[Bulk quote request](#)

Availability	1-3 business days
Species Reactivity	Human
Format	Purified
Host	Rabbit
Clonality	Recombinant Rabbit Monoclonal
Isotype	Rabbit IgG
Clone Name	IL15/7048R
Purity	Protein A/G affinity
UniProt	P40933
Localization	Secreted, Cytoplasm, Nuclear
Applications	Immunohistochemistry (FFPE) : 1-2ug/ml
Limitations	This recombinant IL15 antibody is available for research use only.



IHC staining of FFPE human adrenal gland tissue with recombinant IL15 antibody (clone IL15/7048R). HIER: boil tissue sections in pH 9 10mM Tris with 1mM EDTA for 20 min and allow to cool before testing.



SDS-PAGE analysis of purified, BSA-free recombinant IL15 antibody (clone IL15/7048R) as confirmation of integrity and purity.

Description

Interleukin-15 (IL-15), also designated IL-T, is a cloned cytokine which shares several biological activities but no sequence homology with IL-2. Human, mouse and simian IL-15 cDNA clones have been isolated and characterized. All 3 species encode a 162 amino acid residue precursor protein containing a 48 amino acid leader that is cleaved to generate the mature form of IL-15. IL-15 stimulates the proliferation of T cells and NK cells, while enhancing B cell expansion and antibody production. Unlike IL-2, IL-15 is not produced by lymphocytes, but appears to be produced by macrophages, epithelial lines, muscle and placenta. IL-15 has also been shown to be a chemoattractant for human blood T lymphocytes and to be able to induce lymphokine-activated killer (LAK) activity in NK cells as well as to be able to induce the generation of cytolytic effector cells. Studies have shown that IL-15 is the only other cytokine that shares the subunit.

Application Notes

Optimal dilution of the recombinant IL15 antibody should be determined by the researcher.

Immunogen

A recombinant protein fragment was used as the immunogen for the recombinant IL15 antibody.

Storage

Aliquot the recombinant IL15 antibody and store frozen at -20oC or colder. Avoid repeated freeze-thaw cycles.