

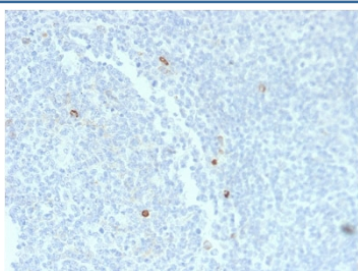
## Recombinant IgM Heavy Chain Antibody [clone rIM373] (V7425)

Catalog No.	Formulation	Size
V7425-100UG	0.2 mg/ml in 1X PBS with 0.1 mg/ml BSA (US sourced) and 0.05% sodium azide	100 ug
V7425-20UG	0.2 mg/ml in 1X PBS with 0.1 mg/ml BSA (US sourced) and 0.05% sodium azide	20 ug
V7425SAF-100UG	1 mg/ml in 1X PBS; BSA free, sodium azide free	100 ug
V7425IHC-7ML	Prediluted in 1X PBS with 0.1 mg/ml BSA (US sourced) and 0.05% sodium azide; *For IHC use only*	7 ml

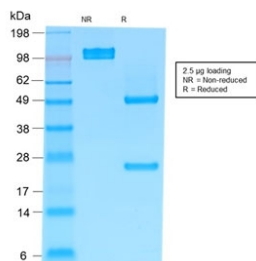
Recombinant **MOUSE MONOCLONAL**

[Bulk quote request](#)

<b>Species Reactivity</b>	Human
<b>Format</b>	Purified
<b>Host</b>	Mouse
<b>Clonality</b>	Recombinant Mouse Monoclonal
<b>Isotype</b>	Mouse IgG1, kappa
<b>Clone Name</b>	rIM373
<b>Purity</b>	Protein G affinity chromatography
<b>Gene ID</b>	3507
<b>Localization</b>	Cytoplasm, cell surface and secreted
<b>Applications</b>	Immunohistochemistry (FFPE) : 0.5-1ug/ml for 30 min at RT
<b>Limitations</b>	This recombinant IgM Heavy Chain antibody is available for research use only.



IHC staining of FFPE human tonsil tissue with recombinant IgM Heavy Chain antibody (clone rIM373). HIER: boil tissue sections in pH6, 10mM citrate buffer, for 10-20 min and allow to cool before testing.



SDS-PAGE analysis of purified, BSA-free recombinant IgM Heavy Chain antibody (clone rIM373) as confirmation of integrity and purity.

## Description

This antibody recognizes a protein of 75kDa, identified as the mu heavy chain of human immunoglobulins. It does not cross-react with alpha (IgA), gamma (IgG), epsilon (IgE), or delta (IgD), heavy chains, T-cells, monocytes, granulocytes, or erythrocytes. The antibody is useful in the identification of leukemias, plasmacytomas, and certain non-Hodgkin's lymphomas. The most common feature of these malignancies is the restricted expression of a single heavy chain class. Demonstration of clonality in lymphoid infiltrates indicates that the infiltrate is clonal and therefore malignant.

## Application Notes

The concentration stated for each application is a general starting point. Variations in protocols, secondaries and substrates may require the recombinant Heavy Chain antibody to be titrated up or down for optimal performance.

1. The prediluted format is supplied in a dropper bottle and is optimized for use in IHC. After epitope retrieval step (if required), drip mAb solution onto the tissue section and incubate at RT for 30 min.

## Immunogen

Recombinant protein was used as the immunogen for this recombinant IgM Heavy Chain antibody.

## Storage

Store the recombinant IgM Heavy Chain antibody at 2-8oC (with azide) or aliquot and store at -20oC or colder (without azide).

## References (1)