

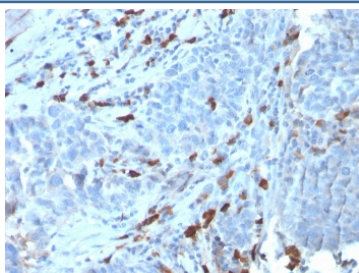
## Recombinant IgM Antibody [clone IGHM/3135R] (V8047)

Catalog No.	Formulation	Size
V8047-100UG	0.2 mg/ml in 1X PBS with 0.1 mg/ml BSA (US sourced) and 0.05% sodium azide	100 ug
V8047-20UG	0.2 mg/ml in 1X PBS with 0.1 mg/ml BSA (US sourced) and 0.05% sodium azide	20 ug
V8047SAF-100UG	1 mg/ml in 1X PBS; BSA free, sodium azide free	100 ug

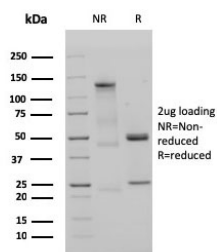
Recombinant **RABBIT MONOCLONAL**

[Bulk quote request](#)

<b>Availability</b>	1-3 business days
<b>Species Reactivity</b>	Human
<b>Format</b>	Purified
<b>Clonality</b>	Recombinant Rabbit Monoclonal
<b>Isotype</b>	Rabbit IgG, kappa
<b>Clone Name</b>	IGHM/3135R
<b>Purity</b>	Protein A affinity chromatography
<b>UniProt</b>	P01871
<b>Localization</b>	Cytoplasmic, cell surface, secreted
<b>Applications</b>	Immunohistochemistry (FFPE) : 1-2ug/ml
<b>Limitations</b>	This recombinant IgM antibody is available for research use only.



IHC staining of FFPE human tumor with recombinant IgM antibody (clone IGHM/3135R).  
 HIER: boil tissue sections in pH 9 10mM Tris with 1mM EDTA for 10-20 min and allow to cool before testing.



SDS-PAGE analysis of purified, BSA-free recombinant IgM antibody (clone IGHM/3135R) as confirmation of integrity and purity.

## Description

Recognizes a protein of 75kDa, identified as mu heavy chain of human immunoglobulins. It does not cross-react with alpha (IgA), gamma (IgG), epsilon (IgE), or delta (IgD), heavy chains, T-cells, monocytes, granulocytes, or erythrocytes. Monomeric IgM is expressed as a membrane bound antibody on the surface of B cells and as a pentamer when secreted by plasma cells. IgM antibody is prominent in early immune responses to most antigens. Aberrant levels are associated with immune deficiency states, hereditary deficiencies, myeloma, Waldenstrom's macroglobulinemia, chronic infection and hepatocellular disease. This MAb is useful in the identification of leukemias, plasmacytomas, and certain non-Hodgkin's lymphomas. The most common feature of these malignancies is the restricted expression of a single heavy chain class. Demonstration of clonality in lymphoid infiltrates indicates that the infiltrate is clonal and therefore malignant.

## Application Notes

Optimal dilution of the recombinant IgM antibody should be determined by the researcher.

## Immunogen

Full length recombinant human IGHM protein was used as the immunogen for the recombinant IgM antibody.

## Storage

Store the recombinant IgM antibody at 2-8oC (with azide) or aliquot and store at -20oC or colder (without azide).