

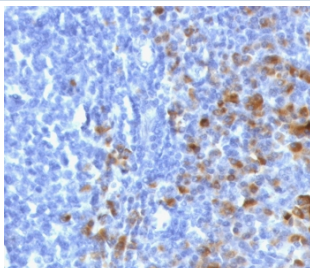
Recombinant IgG Antibody / Rabbit Monoclonal [clone GHC07-2R] (V3710)

Catalog No.	Formulation	Size
V3710-100UG	0.2 mg/ml in 1X PBS with 0.1 mg/ml BSA (US sourced) and 0.05% sodium azide	100 ug
V3710-20UG	0.2 mg/ml in 1X PBS with 0.1 mg/ml BSA (US sourced) and 0.05% sodium azide	20 ug
V3710SAF-100UG	1 mg/ml in 1X PBS; BSA free, sodium azide free	100 ug
V3710IHC-7ML	Prediluted in 1X PBS with 0.1 mg/ml BSA (US sourced) and 0.05% sodium azide; *For IHC use only*	7 ml

Recombinant **RABBIT MONOCLONAL**

[Bulk quote request](#)

Availability	1-3 business days
Species Reactivity	Human. Other species not tested.
Format	Purified
Clonality	Recombinant Rabbit Monoclonal
Isotype	Rabbit IgG, kappa
Clone Name	GHC07-2R
Purity	Protein A affinity chromatography
UniProt	P01857
Localization	Cytoplasm, cell surface and secreted
Applications	Immunohistochemistry (FFPE) : 1-2ug/ml for 30 min at RT Prediluted IHC Only Format : incubate for 30 min at RT (1)
Limitations	This recombinant IgG antibody is available for research use only.



IHC staining of FFPE human tonsil tissue with recombinant IgG antibody (clone GHC07-2R). Required HIER: boil tissue sections in 10mM citrate buffer, pH6, for 10-20 min followed by cooling at RT for 20 min.

Description

This antibody reacts with all sub-classes of gamma chain of human immunoglobulins. It does not cross-react with alpha (IgA), mu (IgM), epsilon (IgE), or delta (IgD), heavy chains, T-cells, monocytes, granulocytes, or erythrocytes. It is useful in the identification of leukemias, plasmacytomas, and certain non-Hodgkin's lymphomas. The most common feature of these malignancies is the restricted expression of a single heavy chain class. Demonstration of clonality in lymphoid infiltrates indicates that the infiltrate is clonal and therefore malignant.

Application Notes

The stated application concentrations are suggested starting points. Titration of the recombinant IgG antibody may be required due to differences in protocols and secondary/substrate sensitivity.

1. The prediluted format is supplied in a dropper bottle and is optimized for use in IHC. After epitope retrieval step (if required), drip mAb solution onto the tissue section and incubate at RT for 30 min.

Immunogen

Human Ig Gamma Chain was used as the immunogen for this recombinant IgG antibody.

Storage

Store the recombinant IgG antibody at 2-8oC (with azide) or aliquot and store at -20oC or colder (without azide).