

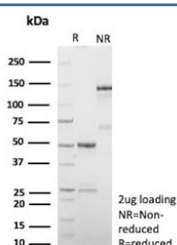
Recombinant Human Nuclear Antigen Antibody [clone r235-1] (V8830)

Catalog No.	Formulation	Size
V8830-100UG	0.2 mg/ml in 1X PBS with 0.1 mg/ml BSA (US sourced), 0.05% sodium azide	100 ug
V8830-20UG	0.2 mg/ml in 1X PBS with 0.1 mg/ml BSA (US sourced), 0.05% sodium azide	20 ug
V8830SAF-100UG	1 mg/ml in 1X PBS; BSA free, sodium azide free	100 ug

Recombinant MOUSE MONOCLONAL

[Bulk quote request](#)

Availability	1-3 business days
Species Reactivity	Human
Format	Purified
Clonality	Recombinant Mouse Monoclonal
Isotype	Mouse IgG2a, kappa
Clone Name	r235-1
Purity	Protein A/G affinity
UniProt	Not Known
Localization	Nucleus
Applications	Flow Cytometry : 1-2ug/million cells Immunofluorescence : 1-3ug/ml
Limitations	This recombinant Human Nuclear Antigen antibody is available for research use only.



SDS-PAGE analysis of purified, BSA-free recombinant Human Nuclear Antigen antibody (r235-1) as confirmation of integrity and purity.

Description

This antibody recognizes an antigen associated with the nuclei in human cells. It can be used to stain the nuclei in cell or tissue preparations and can be used as a nuclear marker in subcellular fractions.

Application Notes

Optimal dilution of the recombinant Human Nuclear Antigen antibody should be determined by the researcher.

Immunogen

Nuclei of human myeloid leukemia biopsy cells were used as the immunogen for the recombinant Human Nuclear Antigen antibody.

Storage

Aliquot the recombinant Human Nuclear Antigen antibody and store frozen at -20oC or colder. Avoid repeated freeze-thaw cycles.