

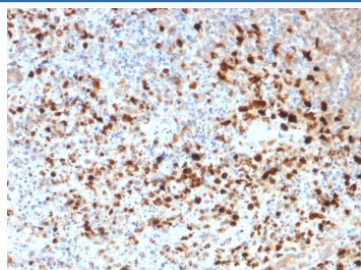
Recombinant HSV1 Antibody / Herpes Simplex Virus Type I [clone HSV1/1934] (V3661)

Catalog No.	Formulation	Size
V3661-100UG	0.2 mg/ml in 1X PBS with 0.1 mg/ml BSA (US sourced) and 0.05% sodium azide	100 ug
V3661-20UG	0.2 mg/ml in 1X PBS with 0.1 mg/ml BSA (US sourced) and 0.05% sodium azide	20 ug
V3661SAF-100UG	1 mg/ml in 1X PBS; BSA free, sodium azide free	100 ug
V3661IHC-7ML	Prediluted in 1X PBS with 0.1 mg/ml BSA (US sourced) and 0.05% sodium azide; *For IHC use only*	7 ml

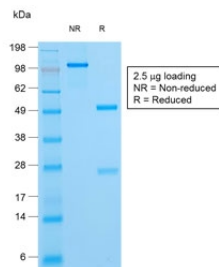
Recombinant MOUSE MONOCLONAL

[Bulk quote request](#)

Availability	1-3 business days
Species Reactivity	Herpes Simplex Virus Type I
Format	Purified
Host	Mouse
Clonality	Recombinant Mouse Monoclonal
Isotype	Mouse IgG1, kappa
Clone Name	HSV1/1934
Purity	Protein G affinity chromatography
Localization	Nuclear, cytoplasmic
Applications	Immunohistochemistry (FFPE) : 1-2ug/ml for 30 min at RT
Limitations	This recombinant HSV1 antibody is available for research use only.



IHC staining of FFPE human cervix with recombinant HSV1 antibody (clone HSV1/1934). Required HIER: boil tissue sections in pH6, 10mM citrate buffer, for 10-20 min followed by cooling at RT for 20 min.



SDS-PAGE analysis of purified, BSA-free recombinant HSV1 antibody (clone HSV1/1934) as confirmation of integrity and purity.

Description

The antibody reacts with HSV type 1 specific antigen. It is suitable for detection of HSV in human cellular material obtained from superficial lesions or biopsies and for the early identification of HSV in infected tissue cultures. The herpes simplex virus (HSV) (also known as cold sore, night fever or fever blister) is a virus that causes a contagious disease. There are two main types of Herpes Simplex Virus (HSV), 1 and 2. The HSV-1 strain generally appears in the orofacial organs. HSV2 usually resides in the sacral ganglion at the base of the spine. All herpes viruses are morphologically identical: they have a large double-stranded DNA genome and the virion consists of an icosahedral nucleocapsid, which is surrounded by a lipid bilayer envelope.

Application Notes

The stated application concentrations are suggested starting points. Titration of the recombinant HSV1 antibody may be required due to differences in protocols and secondary/substrate sensitivity.

1. The prediluted format is supplied in a dropper bottle and is optimized for use in IHC. After epitope retrieval step (if required), drip mAb solution onto the tissue section and incubate at RT for 30 min.

Immunogen

Detergent-solubilized herpes simplex virus (HSV) type 1 infected cells were used as the immunogen for the recombinant HSV1 antibody.

Storage

Store the recombinant HSV1 antibody at 2-8°C (with azide) or aliquot and store at -20°C or colder (without azide).