

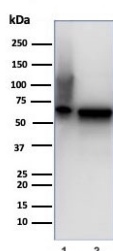
Recombinant HSPD1 Antibody / HSP60 [clone rHSPD1/6497] (V9307)

Catalog No.	Formulation	Size
V9307-100UG	0.2 mg/ml in 1X PBS with 0.1 mg/ml BSA (US sourced), 0.05% sodium azide	100 ug
V9307-20UG	0.2 mg/ml in 1X PBS with 0.1 mg/ml BSA (US sourced), 0.05% sodium azide	20 ug
V9307SAF-100UG	1 mg/ml in 1X PBS; BSA free, sodium azide free	100 ug

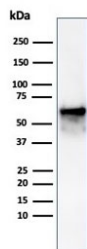
Recombinant **MOUSE MONOCLONAL**

[Bulk quote request](#)

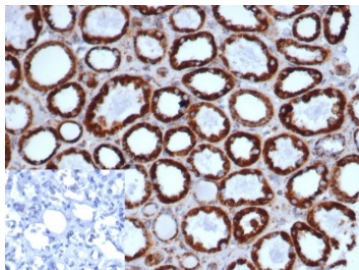
Availability	1-3 business days
Species Reactivity	Human, Mouse, Rat
Format	Purified
Host	Mouse
Clonality	Recombinant Mouse Monoclonal
Isotype	Mouse IgG1, kappa
Clone Name	rHSPD1/6497
Purity	Protein A/G affinity
UniProt	P10809
Localization	Cytoplasm
Applications	Western Blot : 1-2ug/ml Immunohistochemistry (FFPE) : 1-2ug/ml
Limitations	This recombinant HSP60 antibody is available for research use only.



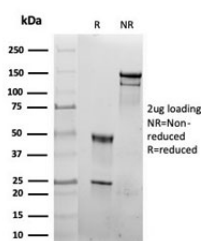
Western blot testing of human 1) Hep-2 and 2) HeLa cell lysate using recombinant HSP60 antibody (clone rHSPD1/6497). Predicted molecular weight: ~60 kDa.



Western blot testing of human Hep-2 cell lysate using recombinant HSP60 antibody (clone rHSPD1/6497). Predicted molecular weight: ~60 kDa.



IHC staining of FFPE human kidney tissue with recombinant HSP60 antibody (clone rHSPD1/6497). Negative control inset: PBS instead of primary antibody to control for secondary binding. HIER: boil tissue sections in pH 9 10mM Tris with 1mM EDTA for 20 min and allow to cool before testing.



SDS-PAGE analysis of purified, BSA-free recombinant HSP60 antibody (clone rHSPD1/6497) as confirmation of integrity and purity.

Description

Recognizes a 60kDa protein, identified as the heat shock protein 60 (hsp60). Its epitope is localized between aa 383-447 of human hsp60. A wide variety of environmental and pathophysiological stressful conditions trigger the synthesis of a family of proteins known as heat shock proteins (hsp s), more appropriately called as stress response proteins (srp s). hsp60 is a potential antigen in a number of autoimmune diseases. In human arthritis and in experimentally induced arthritis in animals, disease development coincides with the development of immune reactivity directed against not only bacterial hsp60, but also against its mammalian homolog. Clone rHSPD1/6497, unlike LK2, recognizes only the mammalian (not bacterial) hsp60 and is useful in distinguishing hsp60 from mammals and bacteria.

Application Notes

Optimal dilution of the recombinant HSP60 antibody should be determined by the researcher.

Immunogen

Recombinant human full-length HSP60 protein was used as the immunogen for the recombinant HSP60 antibody. Its epitope is localized between amino acids 383-447 of human hsp60.

Storage

Aliquot the recombinant HSP60 antibody and store frozen at -20oC or colder. Avoid repeated freeze-thaw cycles.

