

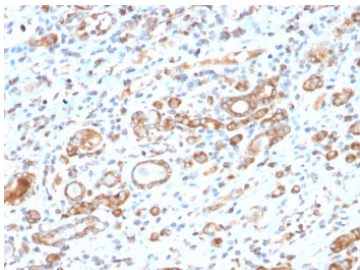
## Recombinant HSP60 Antibody / Rabbit Monoclonal [clone HSPD1/2206R] (V3575)

Catalog No.	Formulation	Size
V3575-100UG	0.2 mg/ml in 1X PBS with 0.1 mg/ml BSA (US sourced) and 0.05% sodium azide	100 ug
V3575-20UG	0.2 mg/ml in 1X PBS with 0.1 mg/ml BSA (US sourced) and 0.05% sodium azide	20 ug
V3575SAF-100UG	1 mg/ml in 1X PBS; BSA free, sodium azide free	100 ug
V3575IHC-7ML	Prediluted in 1X PBS with 0.1 mg/ml BSA (US sourced) and 0.05% sodium azide; *For IHC use only*	7 ml

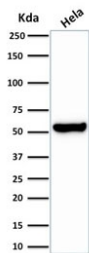
Recombinant **RABBIT MONOCLONAL**

[Bulk quote request](#)

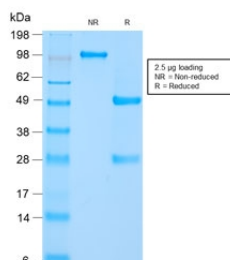
<b>Availability</b>	1-3 business days
<b>Species Reactivity</b>	Human, Dog
<b>Format</b>	Purified
<b>Host</b>	Rabbit
<b>Clonality</b>	Recombinant Rabbit Monoclonal
<b>Isotype</b>	Rabbit IgG, kappa
<b>Clone Name</b>	HSPD1/2206R
<b>Purity</b>	Protein A affinity chromatography
<b>UniProt</b>	P10809
<b>Localization</b>	Cytoplasm (mitochondria)
<b>Applications</b>	Western Blot : 1-2ug/ml Immunohistochemistry (FFPE) : 1-2ug/ml for 30 min at RT
<b>Limitations</b>	This recombinant HSP60 antibody is available for research use only.



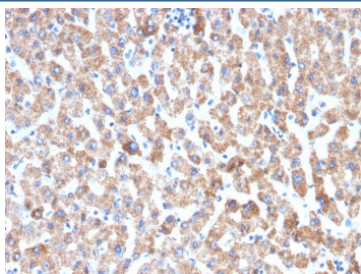
IHC testing of FFPE human liver tissue with recombinant HSP60 antibody (clone HSPD1/2206R). HIER: boil tissue sections in 10mM citrate buffer, pH6, for 10-20 min followed by cooling at RT for 20 min.



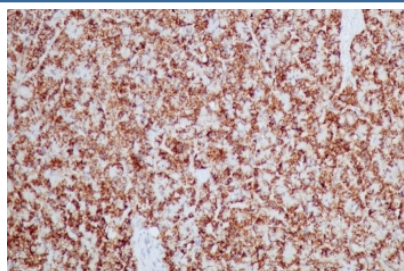
Western blot testing of human HeLa lysate with recombinant HSP60 antibody (clone HSPD1/2206R). Predicted molecular weight: ~60 kDa.



SDS-PAGE analysis of purified, BSA-free recombinant HSP60 antibody (clone HSPD1/2206R) as confirmation of integrity and purity.



IHC testing of FFPE human liver tissue with recombinant HSP60 antibody (clone HSPD1/2206R). HIER: boil tissue sections in 10mM citrate buffer, pH6, for 10-20 min followed by cooling at RT for 20 min.



IHC testing of FFPE dog pancreas tissue with recombinant HSP60 antibody (clone HSPD1/2206R). HIER: boil tissue sections in 10mM citrate buffer, pH6, for 10-20 min followed by cooling at RT for 20 min.

## Description

HSP60 has been implicated in mitochondrial protein import and macromolecular assembly. May facilitate the correct folding of imported proteins. May also prevent misfolding and promote the refolding and proper assembly of unfolded polypeptides generated under stress conditions in the mitochondrial matrix. [UniProt]

## Application Notes

Optimal dilution of the recombinant HSP60 antibody should be determined by the researcher.

1. The prediluted format is supplied in a dropper bottle and is optimized for use in IHC. After epitope retrieval step (if required), drip mAb solution onto the tissue section and incubate at RT for 30 min.

## Immunogen

Recombinant human protein was used as the immunogen for the recombinant HSP60 antibody.

## Storage

Store the recombinant HSP60 antibody at 2-8oC (with azide) or aliquot and store at -20oC or colder (without azide).