

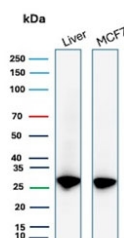
Recombinant HSP27 Antibody / HSPB1 [clone HSPB1/7038R] (V9625)

Catalog No.	Formulation	Size
V9625-100UG	0.2 mg/ml in 1X PBS with 0.1 mg/ml BSA (US sourced), 0.05% sodium azide	100 ug
V9625-20UG	0.2 mg/ml in 1X PBS with 0.1 mg/ml BSA (US sourced), 0.05% sodium azide	20 ug
V9625SAF-100UG	1 mg/ml in 1X PBS; BSA free, sodium azide free	100 ug

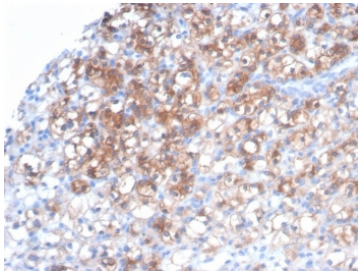
Recombinant **RABBIT MONOCLONAL**

[Bulk quote request](#)

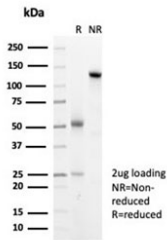
Availability	1-3 business days
Species Reactivity	Human
Format	Purified
Clonality	Recombinant Rabbit Monoclonal
Isotype	Rabbit IgG, kappa
Clone Name	HSPB1/7038R
Purity	Protein A/G affinity
UniProt	P04792
Localization	Cytoplasm, Nucleus
Applications	Immunohistochemistry (FFPE) : 1-2ug/ml Western Blot : 2-4ug/ml
Limitations	This recombinant HSP27 antibody is available for research use only.



Western blot testing of human liver and MCF7 cell lysate with recombinant HSP27 antibody (clone HSPB1/7038R). Predicted molecular weight: 23-27 kDa.



IHC staining of FFPE human renal cell carcinoma tissue with recombinant HSP27 antibody (clone HSPB1/7038R). HIER: boil tissue sections in pH 9 10mM Tris with 1mM EDTA for 20 min and allow to cool before testing.



SDS-PAGE analysis of purified, BSA-free recombinant HSP27 antibody (clone HSPB1/7038R) as confirmation of integrity and purity.

Description

HSP27, also referred to as the Estrogen-Regulated 24K protein and HSP28, is one of several small heat shock proteins produced by all organisms studied. HSP27 synthesis is induced by elevated temperature, as well as by estrogen in hormone responsive cells. Interestingly, human HSP27 also shares greater than 50% homology with low molecular weight Drosophila HSPs and mammalian -crystalline lens protein. Because of the estrogen responsive nature of HSP27, this protein has been studied extensively in human estrogen responsive tissues such as cervix, endometrium and breast tissue. Therefore, HSP27 may be useful in classifying various hormone sensitive tumors.

Application Notes

Optimal dilution of therecombinant HSP27 antibody should be determined by the researcher.

Immunogen

Recombinant human full-length protein was used as the immunogen for the recombinant HSP27 antibody.

Storage

Aliquot the recombinant HSP27 antibody and store frozen at -20oC or colder. Avoid repeated freeze-thaw cycles.