

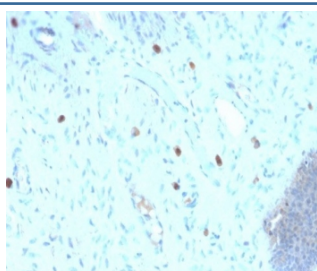
Recombinant HPV16 L1 Antibody / Rabbit Monoclonal [clone HPV16/2058R] (V3660)

| Catalog No. | Formulation | Size |
|----------------|---|--------|
| V3660-100UG | 0.2 mg/ml in 1X PBS with 0.1 mg/ml BSA (US sourced) and 0.05% sodium azide | 100 ug |
| V3660-20UG | 0.2 mg/ml in 1X PBS with 0.1 mg/ml BSA (US sourced) and 0.05% sodium azide | 20 ug |
| V3660SAF-100UG | 1 mg/ml in 1X PBS; BSA free, sodium azide free | 100 ug |
| V3660IHC-7ML | Prediluted in 1X PBS with 0.1 mg/ml BSA (US sourced) and 0.05% sodium azide; *For IHC use only* | 7 ml |

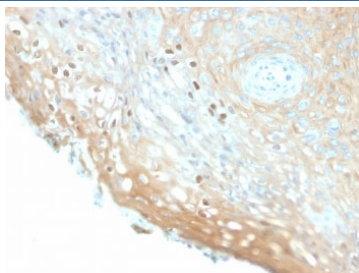
Recombinant **RABBIT MONOCLONAL**

[Bulk quote request](#)

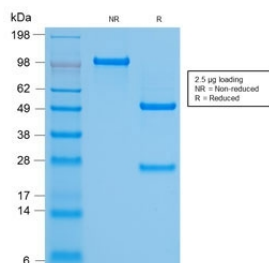
| | |
|--------------------|--|
| Availability | 1-3 business days |
| Species Reactivity | Type 16 of Human Papilloma Virus (HPV-16) |
| Format | Purified |
| Host | Rabbit |
| Clonality | Recombinant Rabbit Monoclonal |
| Isotype | Rabbit IgG, kappa |
| Clone Name | HPV16/2058R |
| Purity | Protein A affinity chromatography |
| UniProt | P03101 |
| Localization | Nuclear |
| Applications | Immunohistochemistry (FFPE) : 0.5-1ug/ml for 30 min at RT |
| Limitations | This recombinant HPV16 L1 antibody is available for research use only. |



IHC staining of FFPE human cervix with recombinant HPV16 L1 antibody (clone HPV16/2058R). Required HIER: boil tissue sections in pH9 EDTA buffer for 45 min followed by cooling at RT for 20 min.



IHC staining of FFPE human cervix with recombinant HPV16 L1 antibody (clone HPV16/2058R). Required HIER: boil tissue sections in pH6, 10mM citrate buffer, for 10-20 min followed by cooling at RT for 20 min.



SDS-PAGE analysis of purified, BSA-free recombinant HPV16 L1 antibody (clone HPV16/2058R) as confirmation of integrity and purity.

Description

Recombinant HPV16 L1 antibody provides a reliable method to detect the L1 major capsid protein of human papillomavirus type 16. HPV16 is one of the most clinically significant viral types, strongly associated with cervical cancer and other anogenital and oropharyngeal malignancies. The L1 protein forms the viral capsid and is essential for viral assembly and infectivity. Because of its immunogenicity, L1 has also been used in the development of virus like particle based vaccines.

L1 self assembles into pentameric capsomers, which organize into the icosahedral capsid structure of HPV. These virus like particles lack viral DNA but mimic the native virus, enabling strong immune responses. This property underpins the efficacy of prophylactic HPV vaccines, which target HPV16 and related types. Understanding L1 structure and expression is critical for virology, vaccine research, and cancer prevention.

The Recombinant HPV16 L1 antibody clone HPV16/2058R ensures highly specific and reproducible detection. Recombinant production guarantees lot to lot consistency, supporting reliable research outcomes. Clone HPV16/2058R has been applied in virology to study HPV assembly, in immunology to assess vaccine induced immune responses, and in oncology to investigate HPV associated cancers. Its specificity provides confidence in experimental interpretation.

Research using clone HPV16/2058R has clarified how HPV16 L1 contributes to viral structure, how immune responses are generated, and how viral infection leads to malignancy. This antibody is also useful for differentiating HPV16 from other viral types, aiding studies of viral epidemiology and diagnostics. It continues to support vaccine development and cancer research worldwide.

NSJ Bioreagents supplies this Recombinant HPV16 L1 antibody to support studies in virology, immunology, and oncology. The protein is also referred to as HPV16 major capsid protein antibody, papillomavirus type 16 L1 antibody, HPV16 virus like particle antibody, and human papillomavirus L1 structural protein antibody.

The antibody reacts very strongly with formalin-fixed, paraffin-embedded tissues containing HPV-16 or -33; very weak reactions were occasionally observed with biopsy specimens or smears containing HPV-6 or HPV-11. It cross-reacts with HPV37.

Application Notes

The stated application concentrations are suggested starting points. Titration of the recombinant HPV16 L1 antibody may be required due to differences in protocols and secondary/substrate sensitivity.

1. The prediluted format is supplied in a dropper bottle and is optimized for use in IHC. After epitope retrieval step (if required), drip mAb solution onto the tissue section and incubate at RT for 30 min.

Immunogen

Human papilloma virus type 16, major capsid protein L1, was used as the immunogen for the recombinant HPV16 L1 antibody.

Storage

Store the recombinant HPV16 L1 antibody at 2-8oC (with azide) or aliquot and store at -20oC or colder (without azide).