

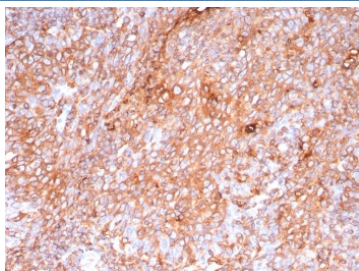
Recombinant HLA-DP/DQ/DR Antibody / MHC II [clone HLA-Pan/9268R] (V5421)

Catalog No.	Formulation	Size
V5421-100UG	0.2 mg/ml in 1X PBS with 0.1 mg/ml BSA (US sourced), 0.05% sodium azide	100 ug
V5421-20UG	0.2 mg/ml in 1X PBS with 0.1 mg/ml BSA (US sourced), 0.05% sodium azide	20 ug
V5421SAF-100UG	1 mg/ml in 1X PBS; BSA free, sodium azide free	100 ug

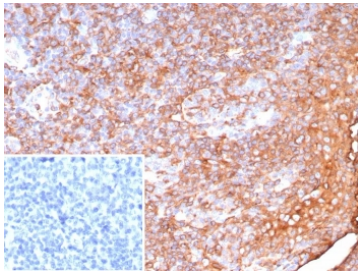
Recombinant **RABBIT MONOCLONAL**

[Bulk quote request](#)

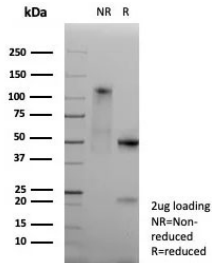
Availability	1-3 business days
Species Reactivity	Human
Format	Purified
Host	Rabbit
Clonality	Recombinant Rabbit Monoclonal
Isotype	Rabbit IgG, kappa
Clone Name	HLA-Pan/9268R
Purity	Protein A/G affinity
UniProt	P04440, P01908, P01909, P01920, P01903
Localization	Cell Surface
Applications	Immunohistochemistry (FFPE) : 1-2ug/ml
Limitations	This recombinant HLA-DP/DQ/DR antibody is available for research use only.



IHC staining of FFPE human tonsil tissue with recombinant HLA-DP/DQ/DR antibody (clone HLA-Pan/9268R). HIER: boil tissue sections in pH 9 10mM Tris with 1mM EDTA for 20 min and allow to cool before testing.



IHC staining of FFPE human tonsil tissue with recombinant HLA-DP/DQ/DR antibody (clone HLA-Pan/9268R). Inset: PBS used in place of primary Ab (secondary Ab negative control). HIER: boil tissue sections in pH 9 10mM Tris with 1mM EDTA for 20 min and allow to cool before testing.



SDS-PAGE analysis of purified, BSA-free recombinant HLA-DP/DQ/DR antibody (HLA-Pan/9268R) as confirmation of integrity and purity.

Description

Reacts with a common epitope of human major histocompatibility (MHC) class II antigens, HLA-DP, -DQ and -DR. Human MHC class II antigens are transmembrane glycoproteins composed of an alpha chain (36kDa) and a beta chain (27kDa). They are expressed primarily on antigen presenting cells such as B lymphocytes, monocytes, macrophages, and thymic epithelial cells and are also present on activated T lymphocytes. Human MHC class II genes are located in the HLA-D region that encodes at least six alpha and ten beta chain genes. Three loci, DR, DQ and DP, encode the major expressed products of the human class II region. The human MHC class II molecules bind intracellularly processed peptides and present them to T-helper cells. They, therefore, have a critical role in the initiation of the immune response.

Application Notes

Optimal dilution of the recombinant HLA-DP/DQ/DR antibody should be determined by the researcher.

Immunogen

The Priess human B cell line was used as the immunogen for the recombinant HLA-DP/DQ/DR antibody.

Storage

Aliquot the recombinant HLA-DP/DQ/DR antibody and store frozen at -20oC or colder. Avoid repeated freeze-thaw cycles.