

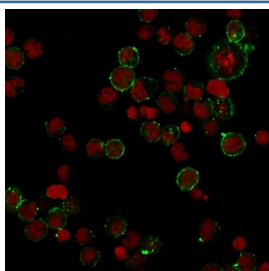
Recombinant HLA-DPB1 Antibody (MHC II) [clone HLA-DPB1/2862R] (V7419)

Catalog No.	Formulation	Size
V7419-100UG	0.2 mg/ml in 1X PBS with 0.1 mg/ml BSA (US sourced) and 0.05% sodium azide	100 ug
V7419-20UG	0.2 mg/ml in 1X PBS with 0.1 mg/ml BSA (US sourced) and 0.05% sodium azide	20 ug
V7419SAF-100UG	1 mg/ml in 1X PBS; BSA free, sodium azide free	100 ug

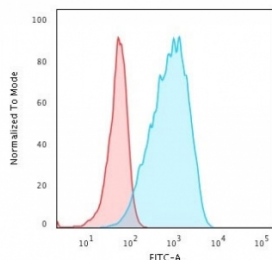
Recombinant **RABBIT MONOCLONAL**

[Bulk quote request](#)

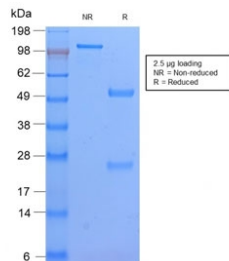
Availability	1-3 business days
Species Reactivity	Human
Format	Purified
Clonality	Recombinant Rabbit Monoclonal
Isotype	Rabbit IgG, kappa
Clone Name	HLA-DPB1/2862R
Purity	Protein A affinity chromatography
UniProt	P04440
Localization	Cell surface
Applications	ELISA : 2-4ug/ml for coating (order BSA/sodium azide-free format) Flow Cytometry : 1-2ug/10 ⁶ cells Immunofluorescence : 1-2ug/ml
Limitations	This recombinant HLA-DPB1 antibody is available for research use only.



Immunofluorescent staining of human Raji cells with recombinant HLA-DPB1 antibody (clone HLA-DPB1/2862R, green) and Reddot nuclear stain (red).



Flow cytometry testing of human Raji cells with recombinant HLA-DPB1 antibody; Red=isotype control, Blue= recombinant HLA-DPB1 antibody.



SDS-PAGE analysis of purified, BSA-free recombinant HLA-DPB1 antibody (clone HLA-DPB1/2862R) as confirmation of integrity and purity.

Description

Recognizes a non-polymorphic determinant of DP-MHC class II. MHC class II antigens are transmembrane glycoproteins of non-covalently linked alpha (33-35kDa) and beta (27-30kDa) chains. It reportedly reacts with B- & non-T, non-B cell lines but not with T- and myeloid cell lines and leukemias. Differential expression of MHC class II antigens on fetal and adult lymphocytes, malignant B cells appears to reflect the stage of cell differentiation which may be useful in the study of lymphoproliferative disorders.

Application Notes

Optimal dilution of the recombinant HLA-DPB1 antibody should be determined by the researcher.

Immunogen

Non-T, non-B human acute lymphoblastic leukemia REH6 cell line was used as the immunogen for the recombinant HLA-DPB1 antibody.

Storage

Store the recombinant HLA-DPB1 antibody at 2-8°C (with azide) or aliquot and store at -20°C or colder (without azide).