

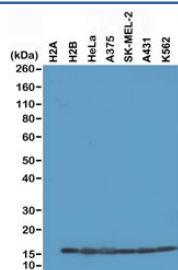
Recombinant Histone H2B Antibody [clone RM230] (R20249)

Catalog No.	Formulation	Size
R20249-100UG	1 mg/ml in PBS with 50% glycerol, 1% BSA and 0.09% sodium azide	100 ug
R20249-25UG	1 mg/ml in PBS with 50% glycerol, 1% BSA and 0.09% sodium azide	25 ug

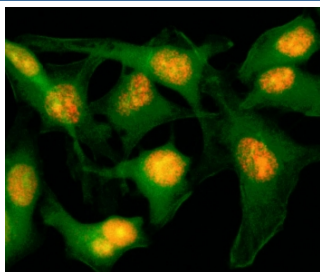
Recombinant **RABBIT MONOCLONAL**

[Bulk quote request](#)

Availability	1-3 business days
Species Reactivity	Human
Format	Purified
Clonality	Recombinant Rabbit Monoclonal
Isotype	Rabbit IgG
Clone Name	RM230
Purity	Protein A purified from animal origin-free supernatant
UniProt	P06899
Gene ID	8349
Applications	Western Blot : 0.1-1ug/ml Immunocytochemistry : 0.5-1ug/ml ELISA : 0.2-1ug/ml
Limitations	This recombinant Histone H2B antibody is available for research use only.



Western blot of recombinant Histone H2A protein, H2B protein and whole cell lysates of human HeLa, A375, SK-MEL-2, A431, and K562 cells using recombinant Histone H2B antibody at 0.2 ug/ml.



ICC/IF of HeLa cells using recombinant Histone H2B antibody (red). Actin filaments have been labeled with fluorescein phalloidin (green).

Description

This recombinant Histone H2B antibody reacts to the Histone H2B protein, independent of post-translational modifications. No cross reactivity with other histone proteins.

Application Notes

The stated application concentrations are suggested starting points. Titration of the recombinant Histone H2B antibody may be required due to differences in protocols and secondary/substrate sensitivity.

Immunogen

A peptide corresponding to the C-terminus of human Histone H2B was used as the immunogen for this recombinant Histone H2B antibody.

Storage

Store the recombinant Histone H2B antibody at -20oC (with glycerol) or aliquot and store at -20oC (without glycerol).