

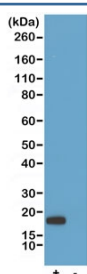
## Recombinant His-Tag Chimeric Human Antibody [clone RMH01] (R20303)

Catalog No.	Formulation	Size
R20303-100UG	1 mg/ml in PBS with 50% glycerol, 1% BSA and 0.09% sodium azide	100 ug

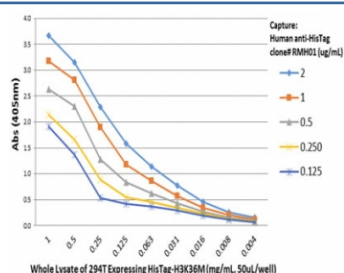
Recombinant **RABBIT MONOCLONAL**

[Bulk quote request](#)

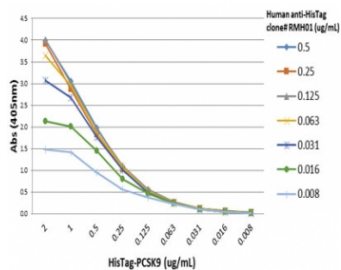
<b>Availability</b>	1-3 business days
<b>Species Reactivity</b>	NA
<b>Format</b>	Purified
<b>Clonality</b>	Recombinant Rabbit Monoclonal
<b>Isotype</b>	Rabbit IgG
<b>Clone Name</b>	RMH01
<b>Purity</b>	Protein A purified from animal origin-free supernatant
<b>UniProt</b>	N/A
<b>Applications</b>	ELISA (Capture) : 0. 1 ug/ml-2 ug/ml ELISA (Detect) : 0.01 ug/ml-0.5 ug/ml Western Blot : 0.1 ug/ml-1 ug/ml
<b>Limitations</b>	This recombinant His-Tag Chimeric Human antibody is available for research use only.



Western blot testing of recombinant His-Tag Chimeric Human antibody (0.2ug/ml) with lysate from HEK293 cells transfected (+) or untransfected (-) with a His-Tag Histone H3 DNA construct. An anti-Human IgG secondary mAb was used as detect.



Sandwich ELISA using recombinant His Tag Chimeric Human antibody at capture, His-Tag Histone H3 (K36M) protein, and anti Histone H3 antibody as detect.



A titer ELISA using a PCSK9-His protein coated plate, recombinant His-Tag Chimeric Human antibody as the detect and anti-human IgG-HRP as the secondary.

## Description

This antibody is a Human-Rabbit chimeric antibody made by fusion of the antigen binding region (variable domains of the heavy and light chains, VH and VL) of rabbit anti-His Tag monoclonal antibody (RM146), with the constant domain of Human IgG1. The mAb is recognized only by an anti-Human IgG secondary antibody.

## Application Notes

The stated application concentrations are suggested starting points. Titration of the recombinant His-Tag Chimeric Human antibody may be required due to differences in protocols and secondary/substrate sensitivity.

## Immunogen

A mixture of a peptides with 6xHis-Tag at the N-terminus and peptides with 6xHis-Tag at the C-terminus was used as the immunogen for the recombinant His-Tag Chimeric Human antibody.

## Storage

Store the recombinant His-Tag Chimeric Human antibody at -20oC.