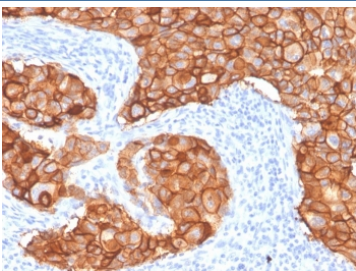


Recombinant HER2 Antibody / Extracellular region [clone ZR5] (V8632)

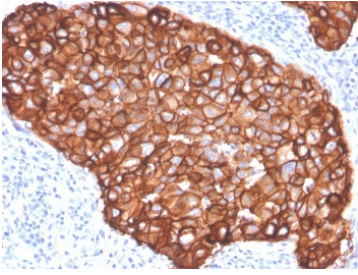
Catalog No.	Formulation	Size
V8632-100UG	0.2 mg/ml in 1X PBS with 0.1 mg/ml BSA (US sourced) and 0.05% sodium azide	100 ug
V8632-20UG	0.2 mg/ml in 1X PBS with 0.1 mg/ml BSA (US sourced) and 0.05% sodium azide	20 ug
V8632SAF-100UG	1 mg/ml in 1X PBS; BSA free, sodium azide free	100 ug

Bulk quote request

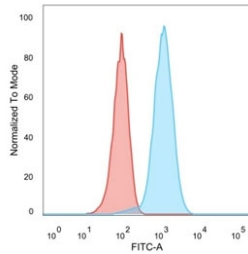
Availability	1-3 business days
Species Reactivity	Human
Format	Purified
Host	Rabbit
Clonality	Rabbit Monoclonal
Isotype	Rabbit
Clone Name	ZR5
Purity	Protein A affinity chromatography
UniProt	P04626
Localization	Cell surface
Applications	Flow Cytometry : 1-2ug/million cells Immunofluorescence : 1-2ug/ml Immunohistochemistry (FFPE) : 1-2ug/ml for 30 minutes at RT
Limitations	This recombinant HER2 antibody is available for research use only.



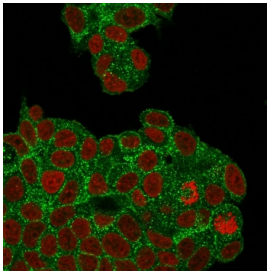
IHC staining of FFPE human breast carcinoma with HER2 antibody (clone ZR5). HIER: boil tissue sections in pH 9 10mM Tris with 1mM EDTA for 20 min and allow to cool before testing.



IHC staining of FFPE human breast carcinoma with HER2 antibody (clone ZR5). HIER: boil tissue sections in pH 9 10mM Tris with 1mM EDTA for 20 min and allow to cool before testing.



Flow cytometry testing of PFA-fixed human MCF7 cells with HER2 antibody (clone ZR5); Red=isotype control, Blue= HER2 antibody.



Immunofluorescent staining of PFA-fixed human MCF7 cells with HER2 antibody (clone ZR5, green) and Phalloidin (red).

Description

Recognizes a protein of 185kDa, which is identified as c-erbB-2/HER-2/neu. Its epitope is localized in the extracellular domain. C-erbB-2/HER-2 is a member of the EGFR family. This MAb is specific and shows minimal cross-reaction with other members of the EGFR-family. Receptors of this family are located on the plasma membrane and consist of an extracellular ligand-binding domain that is connected to a large intracellular domain by a single transmembrane sequence. c-erbB-2/HER-2 protein is over-expressed in a variety of carcinomas especially those of breast and ovary.

Application Notes

Optimal dilution of the recombinant HER2 antibody should be determined by the researcher.

Immunogen

A recombinant protein encoding the extracellular domain of human c-erbB2 was used as the immunogen for the recombinant HER2 antibody.

Storage

Store the recombinant HER2 antibody at 2-8oC (with azide) or aliquot and store at -20oC or colder (without azide).

