

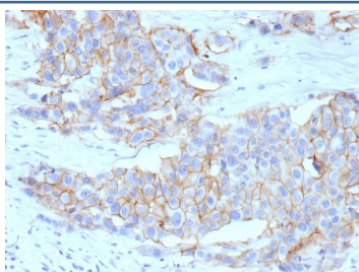
Recombinant HER2 Antibody / ErbB2 / Extracellular region [clone ERBB2/13055R] (V5689)

Catalog No.	Formulation	Size
V5689-100UG	0.2 mg/ml in 1X PBS with 0.1 mg/ml BSA (US sourced), 0.05% sodium azide	100 ug
V5689-20UG	0.2 mg/ml in 1X PBS with 0.1 mg/ml BSA (US sourced), 0.05% sodium azide	20 ug
V5689SAF-100UG	1 mg/ml in 1X PBS; BSA free, sodium azide free	100 ug

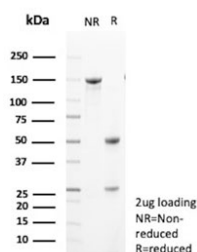
Recombinant RABBIT MONOCLONAL

[Bulk quote request](#)

Availability	1-3 business days
Species Reactivity	Human
Format	Purified
Clonality	Recombinant Rabbit Monoclonal
Isotype	Rabbit IgG, kappa
Clone Name	ERBB2/13055R
UniProt	P04626
Localization	Cell membrane
Applications	Immunohistochemistry (FFPE) : 1-2ug/ml
Limitations	This recombinant HER-2 antibody is available for research use only.



IHC staining of FFPE human breast cancer tissue with recombinant HER-2 antibody (clone ERBB2/13055R). Inset: PBS used in place of primary Ab (secondary Ab negative control). HIER: boil tissue sections in pH 9 10mM Tris with 1mM EDTA for 20 min and allow to cool before testing.



SDS-PAGE analysis of purified, BSA-free recombinant HER-2 antibody (clone ERBB2/13055R) as confirmation of integrity and purity.

Description

Recognizes a protein of 185kDa, which is identified as c-erbB-2/HER-2/neu. Its epitope is localized in the extracellular domain. C-erbB-2/HER-2 is a member of the EGFR family. This MAb is specific and shows minimal cross-reaction with other members of the EGFR-family. Receptors of this family are located on the plasma membrane and consist of an extracellular ligand-binding domain that is connected to a large intracellular domain by a single transmembrane sequence. c-erbB-2/HER-2 protein is over-expressed in a variety of carcinomas especially those of breast and ovary.

Application Notes

Optimal dilution of the recombinant HER-2 antibody should be determined by the researcher.

Immunogen

A recombinant partial protein from human ERBB2 corresponding to the extracellular domain (ECD) was used as the immunogen for the recombinant HER-2 antibody.

Storage

Aliquot the recombinant HER-2 antibody and store frozen at -20oC or colder. Avoid repeated freeze-thaw cycles.