

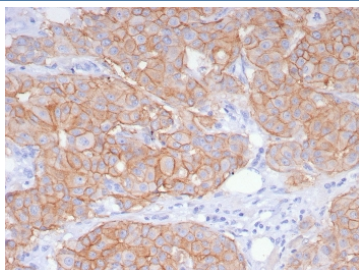
Recombinant HER2 Antibody / ErbB2 [clone ERBB2/8142R] (V4469)

Catalog No.	Formulation	Size
V4469-100UG	0.2 mg/ml in 1X PBS with 0.1 mg/ml BSA (US sourced), 0.05% sodium azide	100 ug
V4469-20UG	0.2 mg/ml in 1X PBS with 0.1 mg/ml BSA (US sourced), 0.05% sodium azide	20 ug
V4469SAF-100UG	1 mg/ml in 1X PBS; BSA free, sodium azide free	100 ug

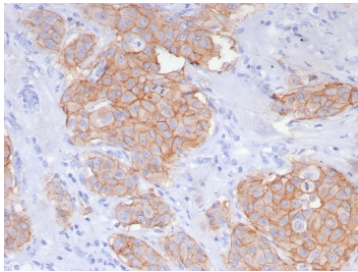
Recombinant **RABBIT MONOCLONAL**

[Bulk quote request](#)

Availability	1-3 business days
Species Reactivity	Human
Format	Purified
Host	Rabbit
Clonality	Recombinant Rabbit Monoclonal
Isotype	Rabbit IgG, kappa
Clone Name	ERBB2/8142R
Purity	Protein A/G affinity
UniProt	P04626
Localization	Cell surface
Applications	Flow Cytometry : 1-2ug/million cells Immunofluorescence : 1-2ug/ml Immunohistochemistry (FFPE) : 1-2ug/ml for 30 minutes at RT
Limitations	This recombinant HER2 antibody is available for research use only.



IHC staining of FFPE human breast carcinoma tissue with recombinant HER2 antibody (clone ERBB2/8142R). HIER: boil tissue sections in pH 9 10mM Tris with 1mM EDTA for 20 min and allow to cool before testing.



IHC staining of FFPE human breast carcinoma tissue with recombinant HER2 antibody (clone ERBB2/8142R). HIER: boil tissue sections in pH 9 10mM Tris with 1mM EDTA for 20 min and allow to cool before testing.

Description

C-erbB-2/HER-2 is a member of the EGFR family. This mAb is specific and shows minimal cross-reaction with other members of the EGFR-family. Receptors of this family are located on the plasma membrane and consist of an extracellular ligand-binding domain that is connected to a large intracellular domain by a single transmembrane sequence. c-erbB-2/HER-2 protein is over-expressed in a variety of carcinomas especially those of breast and ovary.

Application Notes

Optimal dilution of the recombinant HER2 antibody should be determined by the researcher.

Immunogen

A recombinant partial protein sequence (within amino acids 1055-1255) from the human protein was used as the immunogen for the recombinant HER2 antibody.

Storage

Aliquot the recombinant HER2 antibody and store frozen at -20oC or colder. Avoid repeated freeze-thaw cycles.