

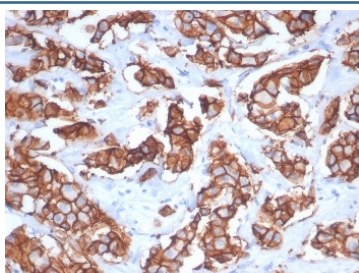
## Recombinant HER2 Antibody / ErbB2 [clone ERBB2/7158R] (V4470)

| Catalog No.    | Formulation   | Size   |
|----------------|---|--------|
| V4470-100UG    | 0.2 mg/ml in 1X PBS with 0.1 mg/ml BSA (US sourced), 0.05% sodium azide | 100 ug |
| V4470-20UG     | 0.2 mg/ml in 1X PBS with 0.1 mg/ml BSA (US sourced), 0.05% sodium azide | 20 ug  |
| V4470SAF-100UG | 1 mg/ml in 1X PBS; BSA free, sodium azide free                          | 100 ug |

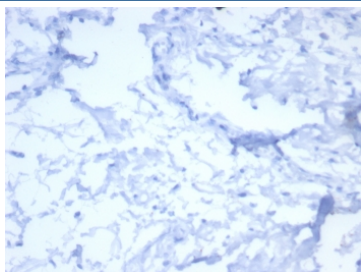
Recombinant **RABBIT MONOCLONAL**

[Bulk quote request](#)

|                           |  |
|---------------------------|--|
| <b>Availability</b>       | 1-3 business days  |
| <b>Species Reactivity</b> | Human  |
| <b>Format</b>             | Purified   |
| <b>Host</b>               | Rabbit   |
| <b>Clonality</b>          | Recombinant Rabbit Monoclonal                                      |
| <b>Isotype</b>            | Rabbit IgG, kappa  |
| <b>Clone Name</b>         | ERBB2/7158R  |
| <b>Purity</b>             | Protein A/G affinity   |
| <b>UniProt</b>            | P04626   |
| <b>Localization</b>       | Cell surface   |
| <b>Applications</b>       | Immunohistochemistry (FFPE) : 1-2ug/ml for 30 minutes at RT        |
| <b>Limitations</b>        | This recombinant HER2 antibody is available for research use only. |



IHC staining of FFPE human breast carcinoma tissue with recombinant HER2 antibody (clone ERBB2/7158R). HIER: boil tissue sections in pH 9 10mM Tris with 1mM EDTA for 20 min and allow to cool before testing.



Negative control: IHC testing of FFPE human breast stroma tissue with recombinant HER2 antibody (clone ERBB2/7158R). HIER: boil tissue sections in pH 9 10mM Tris with 1mM EDTA for 20 min and allow to cool before testing.

## Description

C-erbB-2/HER-2 is a member of the EGFR family. This mAb is specific and shows minimal cross-reaction with other members of the EGFR-family. Receptors of this family are located on the plasma membrane and consist of an extracellular ligand-binding domain that is connected to a large intracellular domain by a single transmembrane sequence. c-erbB-2/HER-2 protein is over-expressed in a variety of carcinomas especially those of breast and ovary.

## Application Notes

Optimal dilution of the recombinant HER2 antibody should be determined by the researcher.

## Immunogen

A recombinant partial protein sequence (within amino acids 1055-1255) from the human protein was used as the immunogen for the recombinant HER2 antibody.

## Storage

Aliquot the recombinant HER2 antibody and store frozen at -20oC or colder. Avoid repeated freeze-thaw cycles.