

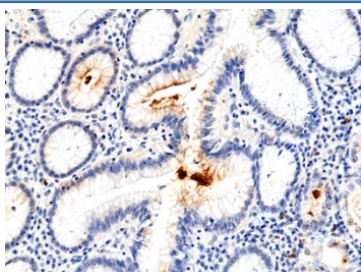
Recombinant Helicobacter pylori Antibody / H. pylori [clone RM400] (R20416)

Catalog No.	Formulation	Size
R20416-0.1ML	Antibody in PBS with 50% glycerol, 1% BSA and 0.09% sodium azide	100 ul

Recombinant **RABBIT MONOCLONAL**

[Bulk quote request](#)

Availability	1-3 business days
Species Reactivity	Helicobacter pylori
Format	Purified
Host	Rabbit
Clonality	Recombinant Rabbit Monoclonal
Isotype	Rabbit IgG
Clone Name	RM400
Purity	Protein A purified from animal origin-free supernatant
UniProt	N/A
Applications	Immunohistochemistry (FFPE) : 1:100-1:200
Limitations	This recombinant Helicobacter pylori antibody is available for research use only.



IHC staining of FFPE human stomach tissue with recombinant Helicobacter pylori antibody at 1:100.

Description

This antibody reacts to Helicobacter pylori.

Application Notes

The stated application concentrations are suggested starting points. Titration of the recombinant Helicobacter pylori antibody may be required due to differences in protocols and secondary/substrate sensitivity.

Immunogen

Proteins purified from *Helicobacter pylori* was used as the immunogen for the recombinant *Helicobacter pylori* antibody.

Storage

Store the recombinant *Helicobacter pylori* antibody at -20oC.